

WAAS CH <b>93635</b> <b>W32A</b>	APP CRS <b>324°</b>	Rwy Ldg TDZE <b>448</b> Apt Elev <b>455</b>
--	------------------------	---

# RNAV (GPS) RWY 32

WHITE MOUNTAIN RGNL (IZG)

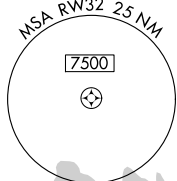
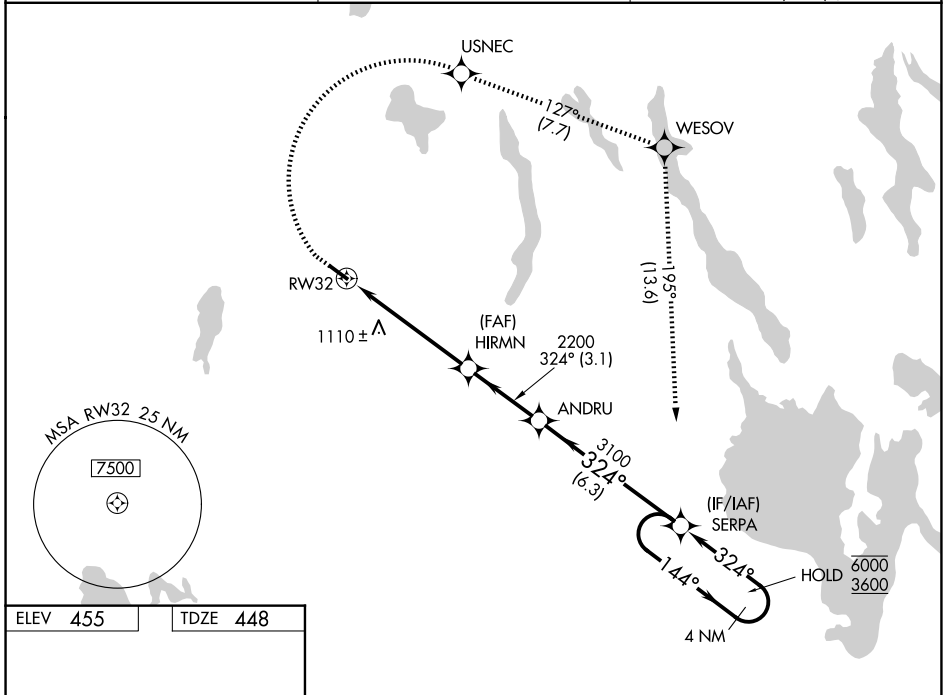
RNP APCH - GPS.

**⚠** Rwy 32 helicopter visibility reduction below 3/4 SM NA. VDP NA when using LEW altimeter setting. Circling Rwy 14 NA at night. When local altimeter setting not received, use LEW altimeter setting and increase LPV DA to 1005 feet and all visibilities 1/2 SM; increase all MDAs 100 feet and LNAV visibility Cat B/C 1/2 SM, and Circling visibility Cat B 1/2 SM.

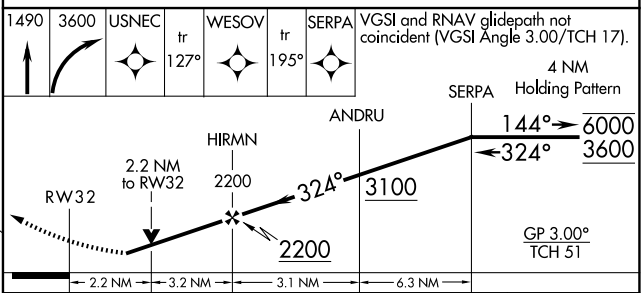
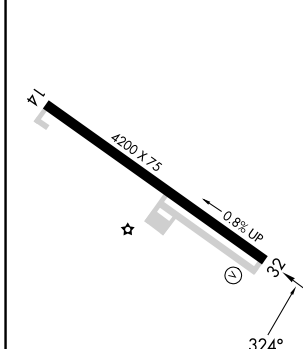
**❄** -28°C

**MISSED APPROACH:** Climb to 1490 then climbing right turn to 3600 direct USNEC and on track 127° to WESOV and on track 195° to SERPA and hold.

ASOS <b>135.775</b>	PORTLAND APP CON * <b>119.75 269.35</b>	UNICOM <b>122.8 (CTAF)</b>
------------------------	--	-------------------------------



ELEV 455	TDZE 448
----------	----------



CATEGORY	A	B	C	D
LPV DA	914-1 3/8		466 (500-1 3/8)	NA
LNAV MDA	1140-1 692 (700-1)		1140-2 692 (700-2)	NA
CIRCLING	1340-1 1/4 885 (900-1/4)	1400-1 1/2 945 (1000-1/2)	1560-3 1105 (1200-3)	NA

REIL Rwy 32  
MIRL Rwy 14-32

NE-1, 14 MAY 2026 to 11 JUN 2026

NE-1, 14 MAY 2026 to 11 JUN 2026