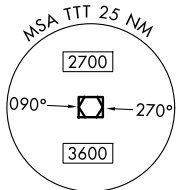


JOE POOL EIGHT DEPARTURE

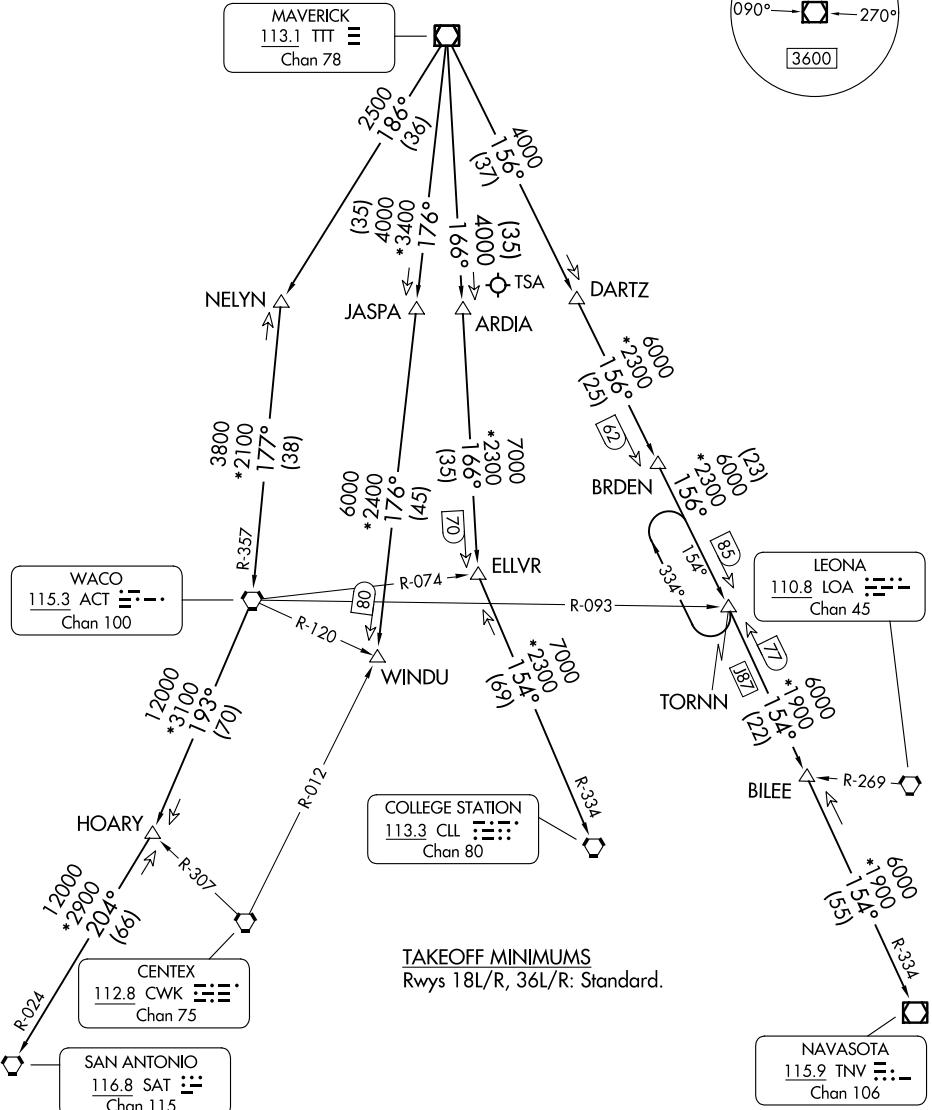
LONE STAR DEP CON
118.1 306.95
CLNC DEL
123.95
GND CON
123.95
DENTON TOWER ★
119.95 (CTAF)

RADAR and DME required.

**TOP ALTITUDE:
ASSIGNED BY ATC**



MAVERICK
113.1 TTT
Chan 78



TAKEOFF MINIMUMS
Rwys 18L/R, 36L/R: Standard.

(CONTINUED ON FOLLOWING PAGE)

NOTE: Chart not to scale.

SC-2, 14 MAY 2026 to 11 JUN 2026

SC-2, 14 MAY 2026 to 11 JUN 2026

JOE POOL EIGHT DEPARTURE