

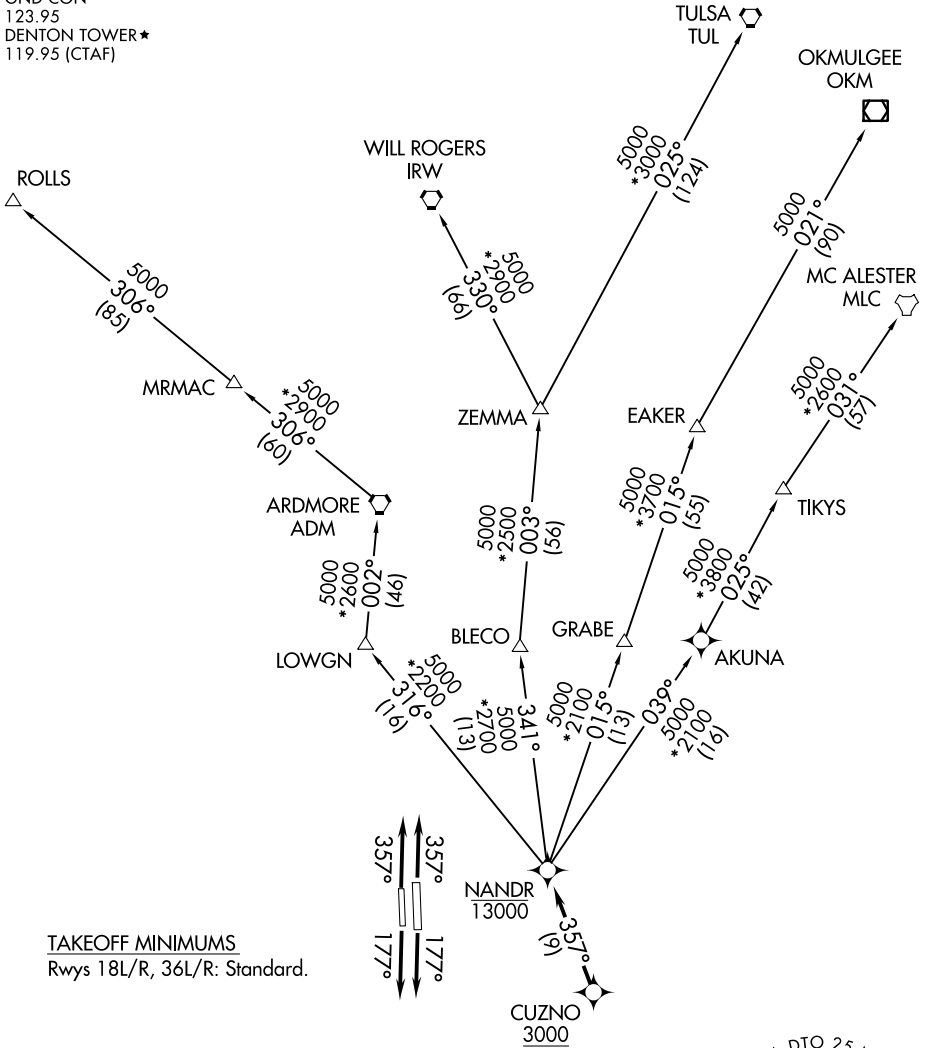
NANDR FOUR DEPARTURE (RNAV)

DENTON, TEXAS

LONE STAR DEP CON
 118.1 306.95
 CLNC DEL
 123.95
 GND CON
 123.95
 DENTON TOWER★
 119.95 (CTAF)

RNAV 1 - DME/DME/IRU or GPS required.
 RADAR required.

**TOP ALTITUDE:
 ASSIGNED BY ATC**



CORRECTED COPY: SC-2, 14 MAY 26 to 09 JUL 26

CORRECTED COPY: SC-2, 14 MAY 26 to 09 JUL 26

NOTE: EAKER Transition: For TUL terminal arrivals only.
 NOTE: TULSA Transition: For all aircraft overflying TUL VORTAC.
 NOTE: Aircraft arriving to the Oklahoma City terminal area, file and expect the ZEMMA enroute transition.

NOTE: Chart not to scale.

(CONTINUED ON FOLLOWING PAGE)

NANDR FOUR DEPARTURE (RNAV)

(NANDR4.NANDR) 14MAY26

DENTON, TEXAS
 DENTON ENTERPRISE (D'TO)