

WAAS CH <b>56602</b> <b>W25A</b>	APP CRS <b>248°</b>	Rwy Ldg <b>5004</b> TDZE <b>949</b> Apt Elev <b>949</b>
--	------------------------	---

# RNAV (GPS) RWY 25

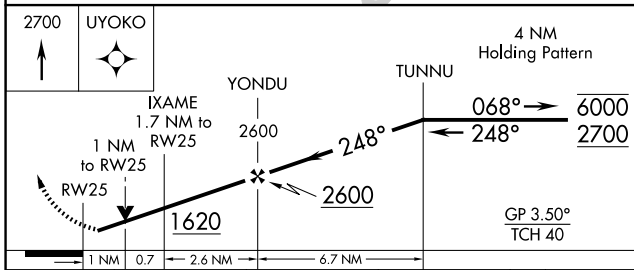
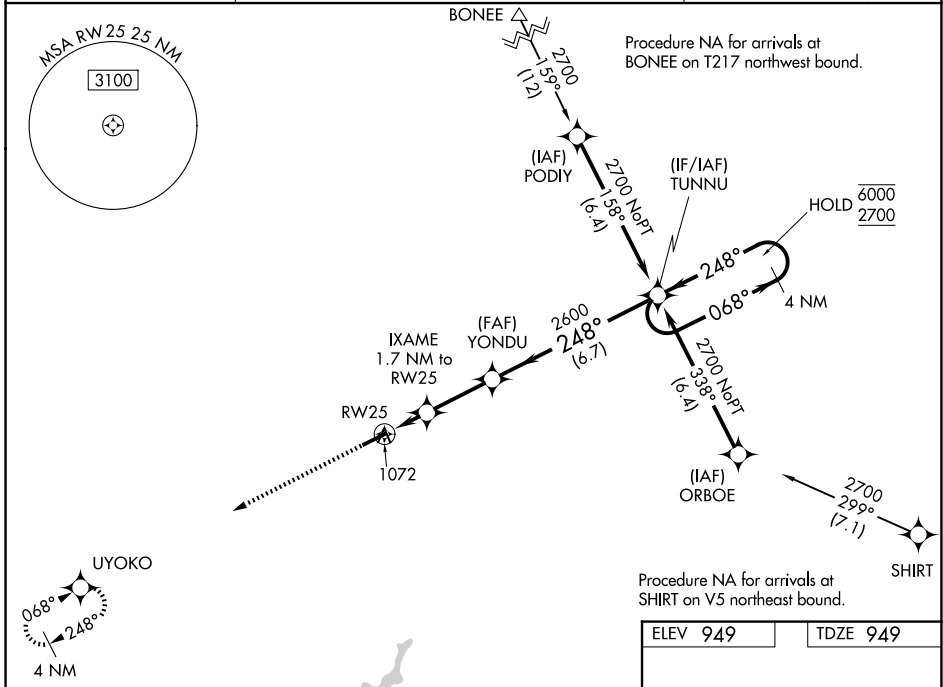
GREENE COUNTY/LEWIS A JACKSON RGNL (GDK)

RNP APCH - GPS.

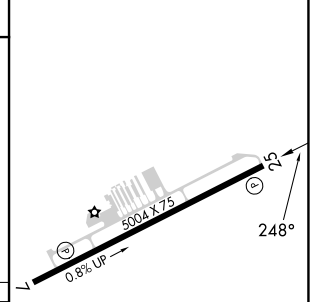
**⚠** For uncompensated Baro-VNAV systems, LNAV/VNAV NA below -16°C or above 54°C.  
**⚠** Rwy 25 helicopter visibility reduction below 3/4 SM NA. VDP and Baro-VNAV NA when using Dayton/Wright Brothers altimeter setting. When local altimeter setting not received, use Dayton/Wright Brothers altimeter setting: increase LPV DA to 1249 feet; increase LNAV/VNAV DA to 1252 feet; increase all MDA 40 feet and LNAV visibility Cat C 1/8 SM.

**MISSED APPROACH:**  
Climb to 2700 direct UYOKO and hold.

AWOS-3 <b>118.525</b>	COLUMBUS APP CON <b>118.85 269.275</b>	UNICOM <b>122.725 (CTAF) 0</b>
--------------------------	---	-----------------------------------



ELEV 949	TDZE 949
----------	----------



CATEGORY	A	B	C	D
LPV DA	1219-1	270 (300-1)		NA
LNAV/VNAV DA	1222-1	273 (300-1)		NA
LNAV MDA	1340-1	391 (400-1)	1340-1 1/8 391 (400-1 1/8)	NA
CIRCLING	1480-1	531 (600-1)	1560-1 3/4 611 (700-1 3/4)	NA

EC-2, 14 MAY 2026 to 11 JUN 2026

EC-2, 14 MAY 2026 to 11 JUN 2026