

WAAS CH 97702 W07A	APP CRS 068°	Rwy Ldg 5004 TDZE 932 Apt Elev 949
--	------------------------	---

RNAV (GPS) RWY 7

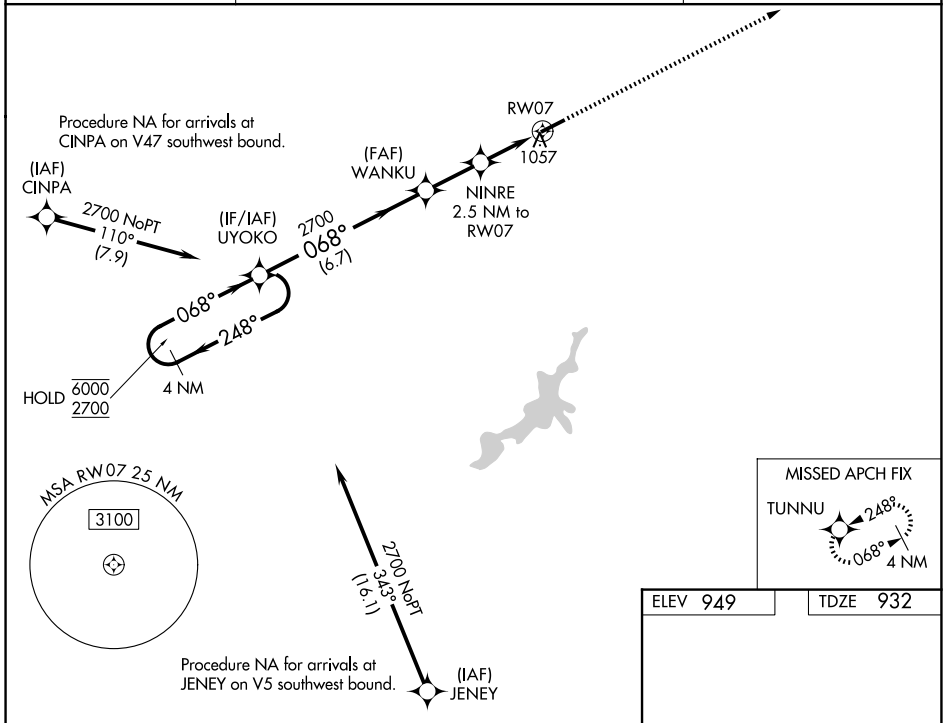
GREENE COUNTY/LEWIS A JACKSON RGNL (GDK)

RNP APCH - GPS.

⚠ When local altimeter setting not received, use Dayton/Wright Brothers altimeter setting: increase LPV DA to 1235 feet; increase LNAV/VNAV DA to 1268 feet; increase all MDA 40 feet and LNAV visibility Cat C 1/8 SM. Rwy 7 helicopter visibility reduction below 3/4 SM NA. VDP and Baro-VNAV NA when using Dayton/Wright Brothers altimeter setting. For uncompensated Baro-VNAV systems, LNAV/VNAV NA below -16°C or above 54°C.

MISSED APPROACH:
Climb to 2700 direct TUNNU and hold.

AWOS-3 118.525	COLUMBUS APP CON 118.85 269.275	UNICOM 122.725 (CTAF) 0
--------------------------	---	-----------------------------------



4 NM Holding Pattern

VGSI and RNAV glidepath not coincident (VGSI Angle 3.50/TCH 30).

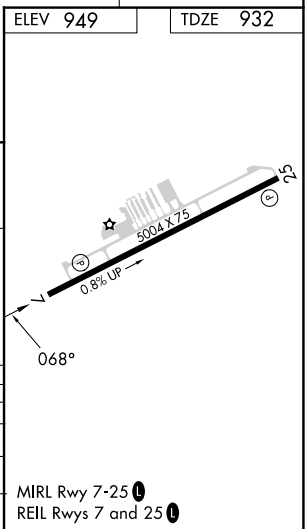
UYOKO WANKU NINRE 2.5 NM to RW07

GP 3.50° TCH 40

6000 ← 248° → 2700 → 068° → 2700 → 1860 → RW07

6.7 NM 2.2 NM 1.5 NM 1 NM

CATEGORY	A	B	C	D
LPV DA	1205-1	273 (300-1)		NA
LNAV/VNAV DA	1238-1	306 (300-1)		NA
LNAV MDA	1320-1	388 (400-1)	1320-1/8 388 (400-1/8)	NA
CIRCLING	1480-1	531 (600-1)	1560-1 3/4 611 (700-1 3/4)	NA



EC-2, 14 MAY 2026 to 11 JUN 2026

EC-2, 14 MAY 2026 to 11 JUN 2026