

MMARY ONE ARRIVAL (RNAV) Arrival Routes

ASPEN, COLORADO

SW-1, 14 MAY 2026 to 11 JUN 2026

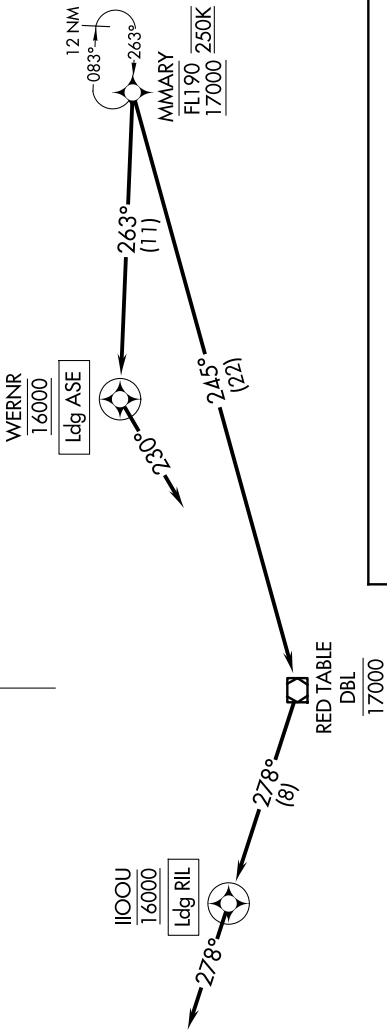
DENVER CENTER
 128.65 282.2
 ASPEN APP CON ★
 123.8 288.3
 ASE ATIS
 120.4
 ASPEN TOWER ★
 118.85 (CTAF) 288.3

○ RIFLE GARFIELD COUNTY

○ ASPEN PITKIN COUNTY / SARDY FLD



RNAV 1 - DME/DME/IRU or GPS.
 RADAR required.



ARRIVAL ROUTE DESCRIPTION

LANDING ASE: From MMARY on track 263° to cross WERNR at 16000, then on track 230°. Expect RADAR vectors to final approach course.

LANDING RIL: From MMARY on track 245° to cross DBL VOR/DME at 17000, then on track 278° to cross IIOOU at 16000, then on track 278°. Expect RADAR vectors to final approach course.

NOTE: Chart not to scale.

SW-1, 14 MAY 2026 to 11 JUN 2026

MMARY ONE ARRIVAL (RNAV) Arrival Routes

ASPEN, COLORADO