

**TOP ALTITUDE:  
 ASSIGNED BY ATC**

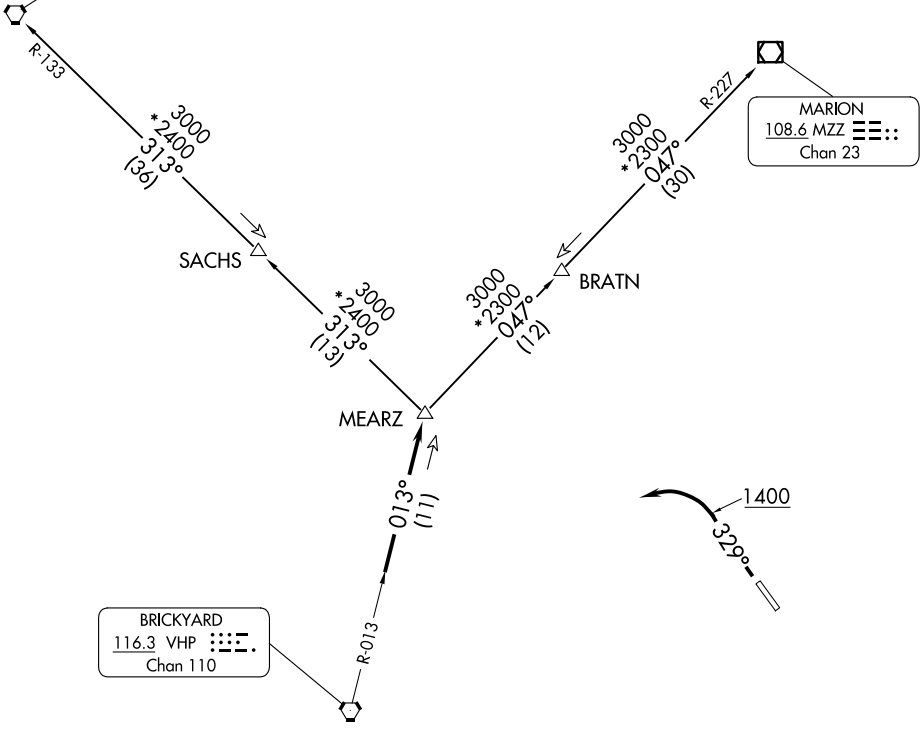
RADAR required.

AWOS-3  
 119.375  
 CLNC DEL  
 121.625  
 INDIANAPOLIS DEP CON  
 127.15 317.8

BOILER  
 115.1 BVT  
 Chan 98

MARION  
 108.6 MZZ  
 Chan 23

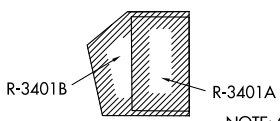
BRICKYARD  
 116.3 VHP  
 Chan 110



TAKEOFF MINIMUMS  
 Rwy 15: NA - obstacles.  
 Rwy 33: Standard.

- NOTE: Turbojets accelerate to 250K until reaching 10000, if unable advise ATC.
- NOTE: Assigned to aircraft with a requested altitude of 11000 or above.
- NOTE: Select appropriate localizer/DME frequency/channel prior to departure.

(NARRATIVE ON FOLLOWING PAGE)



NOTE: Chart not to scale.

EC-2, 14 MAY 2026 to 11 JUN 2026

EC-2, 14 MAY 2026 to 11 JUN 2026