

# GARLAND SIX DEPARTURE

SC-2, 14 MAY 2026 to 11 JUN 2026

## TOP ALTITUDE: ASSIGNED BY ATC

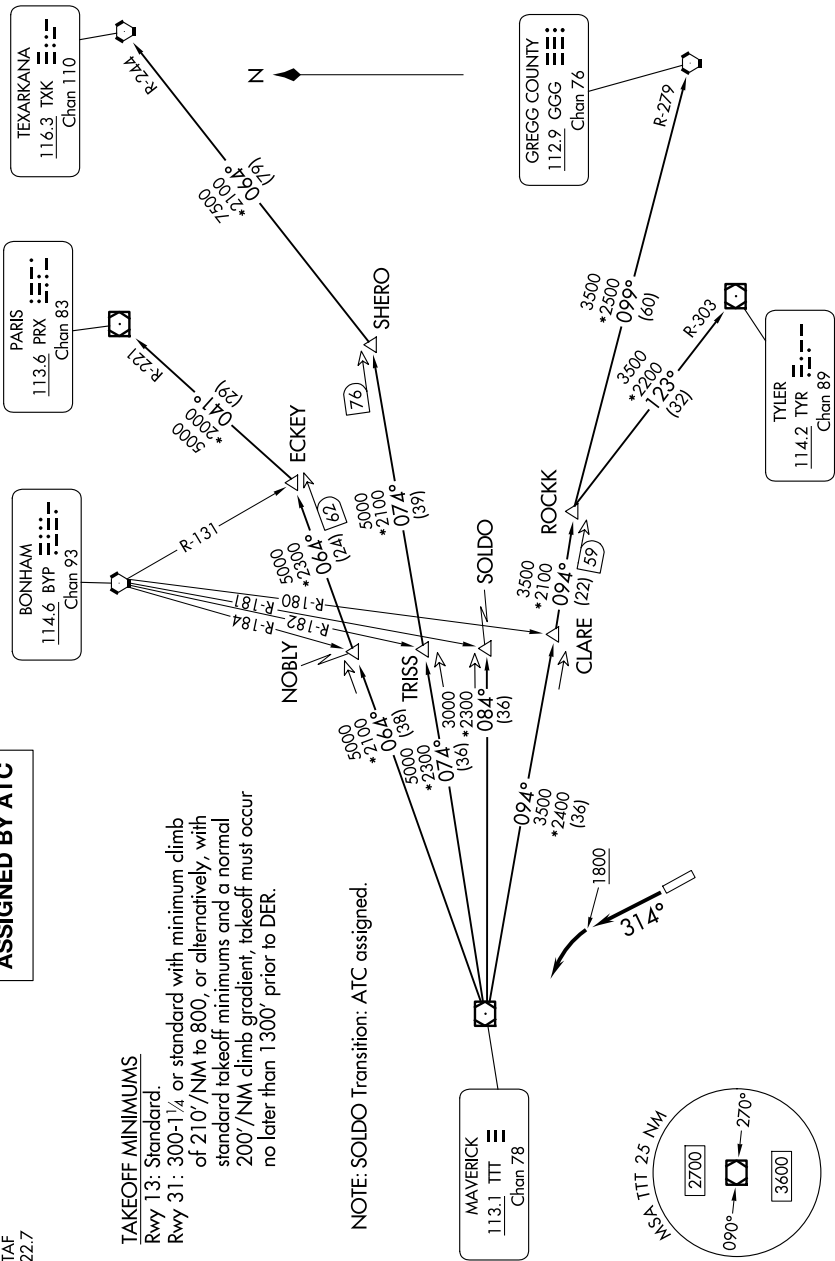
LONE STAR DEP CON  
125.2 343.65  
CTAF  
122.7

### TAKEOFF MINIMUMS

Rwy 13: Standard.  
Rwy 31: 300-1 $\frac{1}{2}$  or standard with minimum climb of 210'/NM to 800, or alternatively, with standard takeoff minimums and a normal 200'/NM climb gradient, takeoff must occur no later than 1300' prior to DER.

NOTE: SOLDO Transition: ATC assigned.

RADAR and DME required.



(CONTINUED ON FOLLOWING PAGE)

SC-2, 14 MAY 2026 to 11 JUN 2026

# GARLAND SIX DEPARTURE

NOTE: Chart not to scale.