

# TIDES ONE DEPARTURE (RNAV)

TAMPA DEP CON  
119.65 353.575  
AWOS-3  
119.275  
CLNC DEL  
118.25

RNAV 1 - DME/DME/IRU or GPS. From PSTOL - GPS.

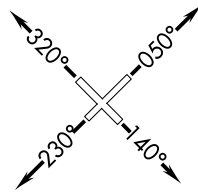
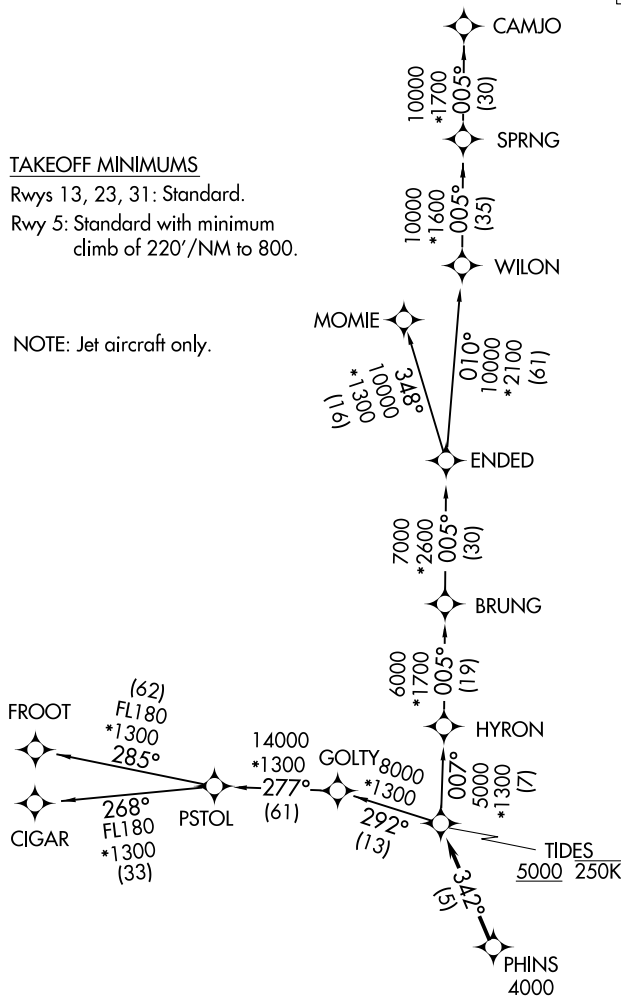
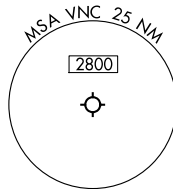
RADAR required for non-GPS equipped aircraft.

**TOP ALTITUDE:  
ASSIGNED BY ATC.**

### TAKEOFF MINIMUMS

Rwys 13, 23, 31: Standard.  
Rwy 5: Standard with minimum  
climb of 220' /NM to 800.

NOTE: Jet aircraft only.



NOTE: Chart not to scale.

(CONTINUED ON FOLLOWING PAGE)

SE-3, 14 MAY 2026 to 11 JUN 2026

SE-3, 14 MAY 2026 to 11 JUN 2026

# TIDES ONE DEPARTURE (RNAV)

(TIDES1.TIDES) 16MAY24

VENICE, FLORIDA  
VENICE MUNI (VNC)