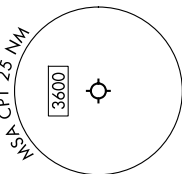


# BOTCH TWO DEPARTURE (RNAV)

CLEBURNE, TEXAS

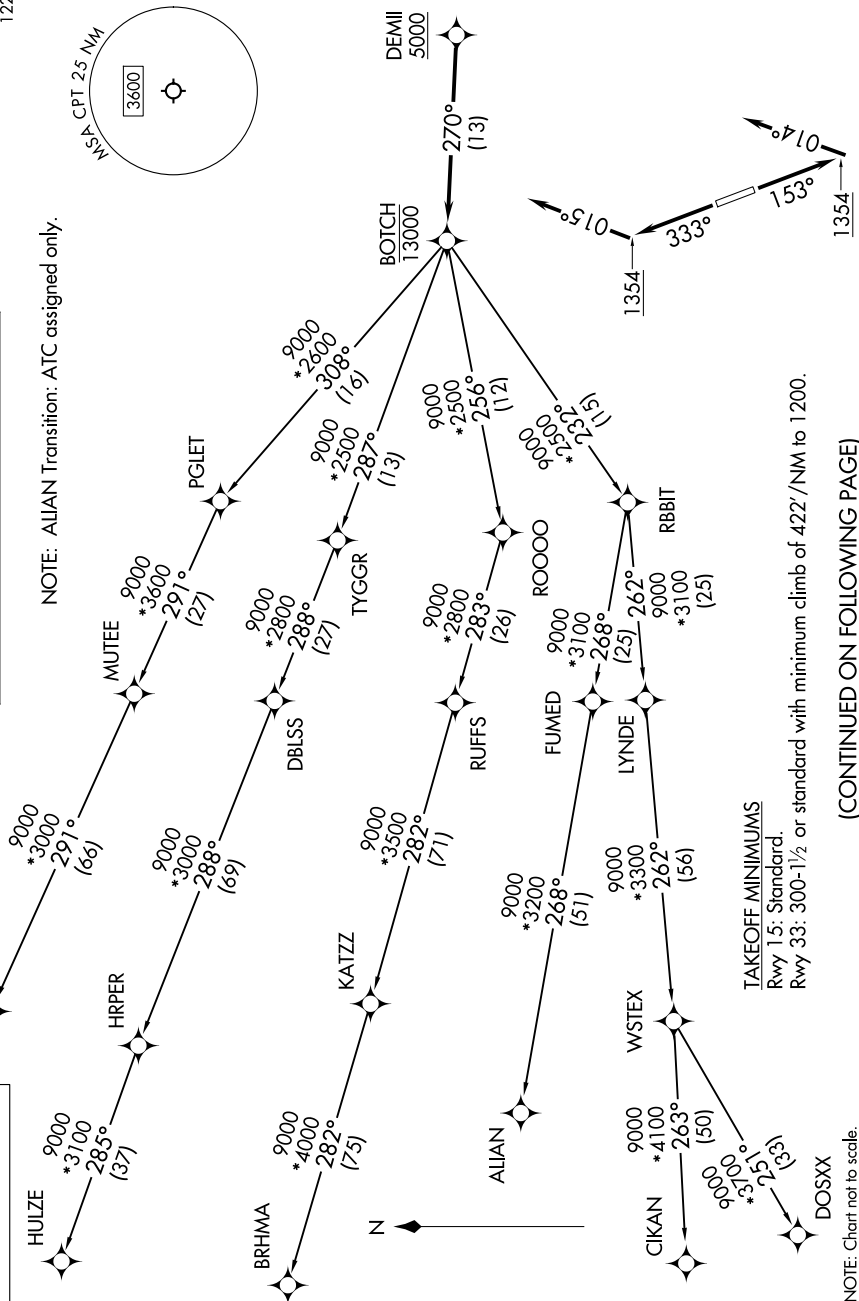
LONE STAR DEP CON  
135.975 379.9  
CTAF  
122.8



RNAV 1 - DME/DME/IRU or GPS required.  
RADAR required.

NOTE: ALIAN Transition: ATC assigned only.

TOP ALTITUDE:  
ASSIGNED BY ATC



TAKEOFF MINIMUMS  
Rwy 15: Standard.  
Rwy 33: 300-1½ or standard with minimum climb of 422'/NM to 1200.

(CONTINUED ON FOLLOWING PAGE)

NOTE: Chart not to scale.

# BOTCH TWO DEPARTURE (RNAV)