

GARLAND SIX DEPARTURE

CLEBURNE, TEXAS

SC-2, 14 MAY 2026 to 11 JUN 2026

**TOP ALTITUDE:
ASSIGNED BY ATC**

LONE STAR DEP CON
135.975 379.9
CTAF
122.8

TAKEOFF MINIMUMS

Rwy 15: Standard.

Rwy 33: 300-1½ or standard with minimum climb of 422'/NM to 1200.

NOTE: SOLDO Transition: ATC assigned.

RADAR and DME required.

TEXARKANA
116.3 TKX
Chan 110

PARIS
113.6 PRX
Chan 83

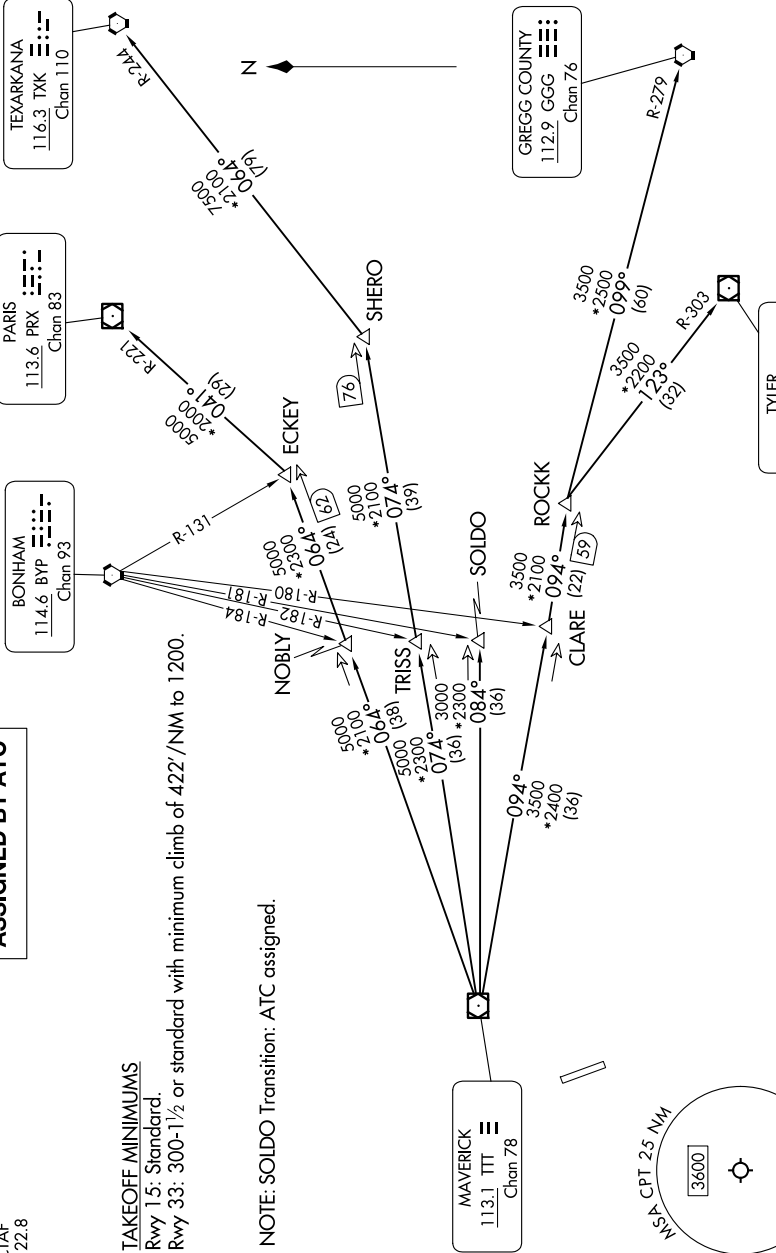
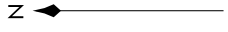
BONHAM
114.6 BYP
Chan 93

MAVERICK
113.1 TTT
Chan 78

GREGG COUNTY
112.9 GGG
Chan 76

TYLER
114.2 TYR
Chan 89

M/S CPT 25 NM
3600



(CONTINUED ON FOLLOWING PAGE)

SC-2, 14 MAY 2026 to 11 JUN 2026

GARLAND SIX DEPARTURE

17APR25

CLEBURNE, TEXAS

CLEBURNE RGNL (CPT)

NOTE: Chart not to scale.