

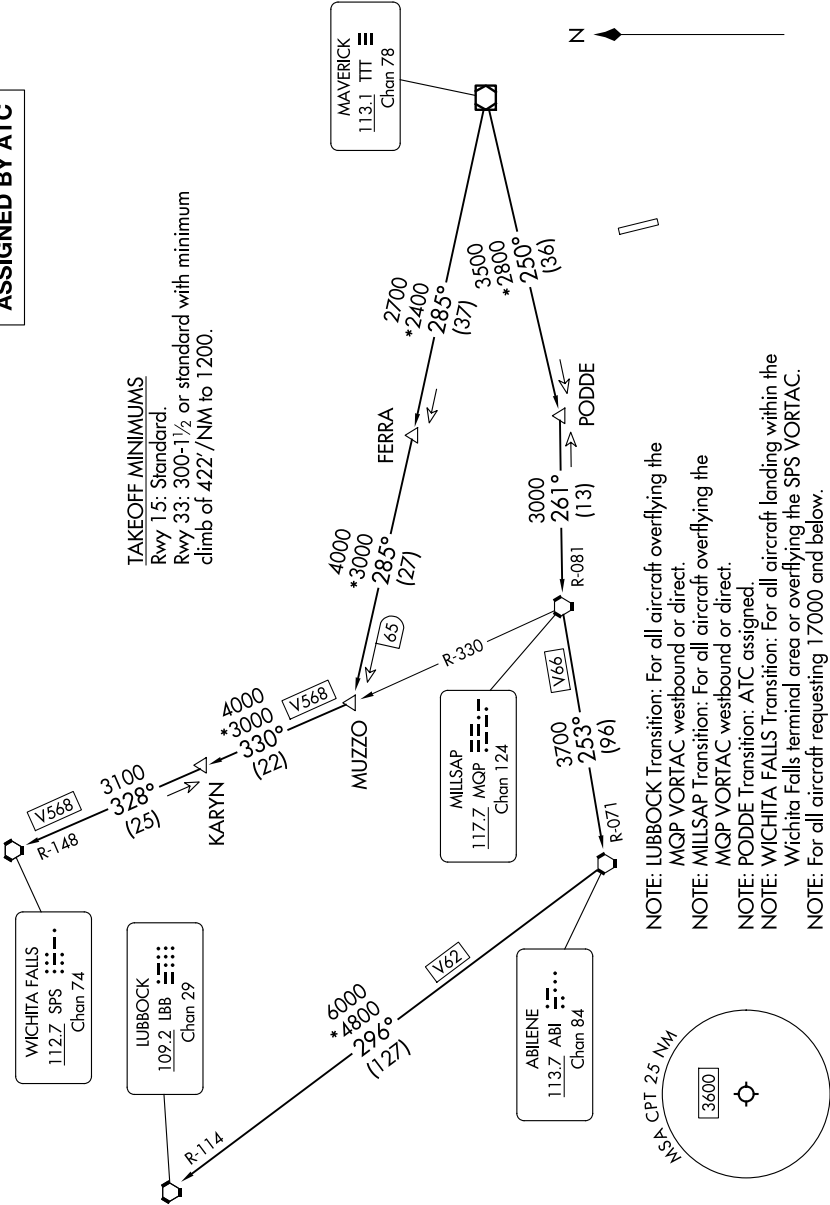
# KINGDOM FIVE DEPARTURE

LONE STAR DEP CON  
135.975 379.9  
CTAF  
122.8

**TOP ALTITUDE:  
ASSIGNED BY ATC**

RADAR and DME required.

**TAKEOFF MINIMUMS**  
Rwy 15: Standard.  
Rwy 33: 300-1/2 or standard with minimum  
climb of 422'/NM to 1200.



- NOTE: LUBBOCK Transition: For all aircraft overlying the MQP VORTAC westbound or direct.
- NOTE: MILLSAP Transition: For all aircraft overlying the MQP VORTAC westbound or direct.
- NOTE: PODDE Transition: ATC assigned.
- NOTE: WICHITA FALLS Transition: For all aircraft landing within the Wichita Falls terminal area or overlying the SPS VORTAC.
- NOTE: For all aircraft requesting 17000 and below.

NOTE: Chart not to scale.

(CONTINUED ON FOLLOWING PAGE)

# KINGDOM FIVE DEPARTURE