

APP CRS	Rwy Ldg	3005
359°	TDZE	60
	Apt Elev	62

RNAV (GPS) RWY 36

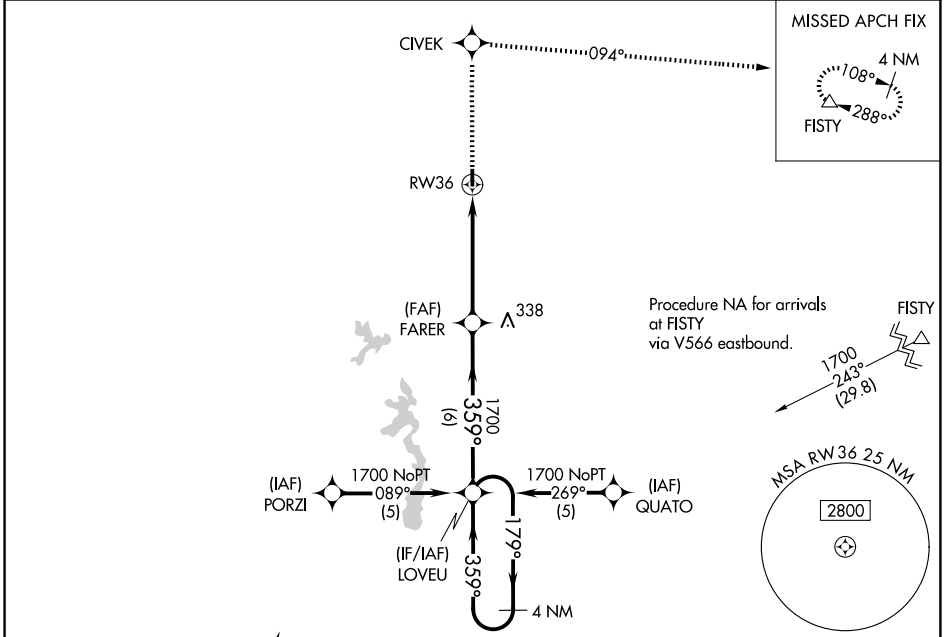
BUNKIE MUNI (2R6)

NA DME/DME RNP-0.3 NA. Visibility reduction by helicopters NA. Use Alexandria Intl altimeter setting; when not received, use Esler Rgnl altimeter setting.

MISSED APPROACH: Climb to 4000 direct CIVEK and right turn via 094° track to FISTY and hold.

MAKS APP CON **125.4 302.2**

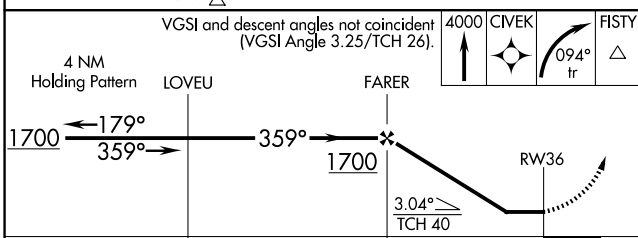
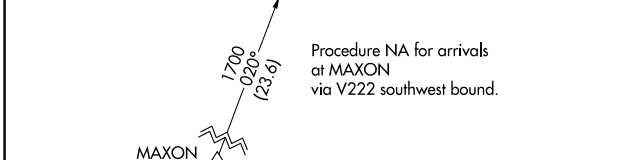
CTAF **122.9**



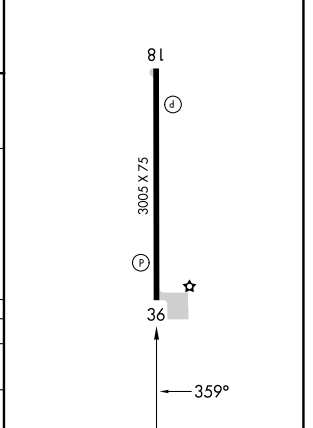
ELEV	62	TDZE	60
------	-----------	------	-----------

REIL Rwy 18 and 36 **1**

MIRL Rwy 18-36 **1**



CATEGORY	A	B	C	D
LNVA MDA	580-1 520 (600-1)		NA	
CIRCLING	580-1 518 (600-1)	660-1 598 (600-1)	NA	



SC-4, 14 MAY 2026 to 11 JUN 2026

SC-4, 14 MAY 2026 to 11 JUN 2026