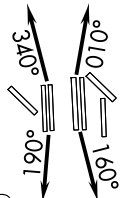


JOE POOL EIGHT DEPARTURE

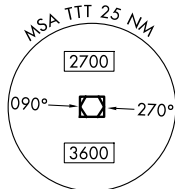
TOP ALTITUDE:
RWYS 13L/R, 17L/C/R, 18L/R,
35L/C/R, 36L/R: 10000
RWYS 31L/R: 5000

LONE STAR DEP CON
 125.125 353.95 (17C/R, 18L/R)
 126.475 363.15 (36L/R)
 118.55 290.35 (35L/C)
 D-ATIS DEP
 135.925
 CLNC DEL
 128.25
 CPDLC
 GND CON
 121.65 121.8 (E)
 121.85 (W)
 DFW TOWER
 126.55 127.5 (E)
 124.15 134.9 (W)

MAVERICK
 113.1 TTT
 Chan 78

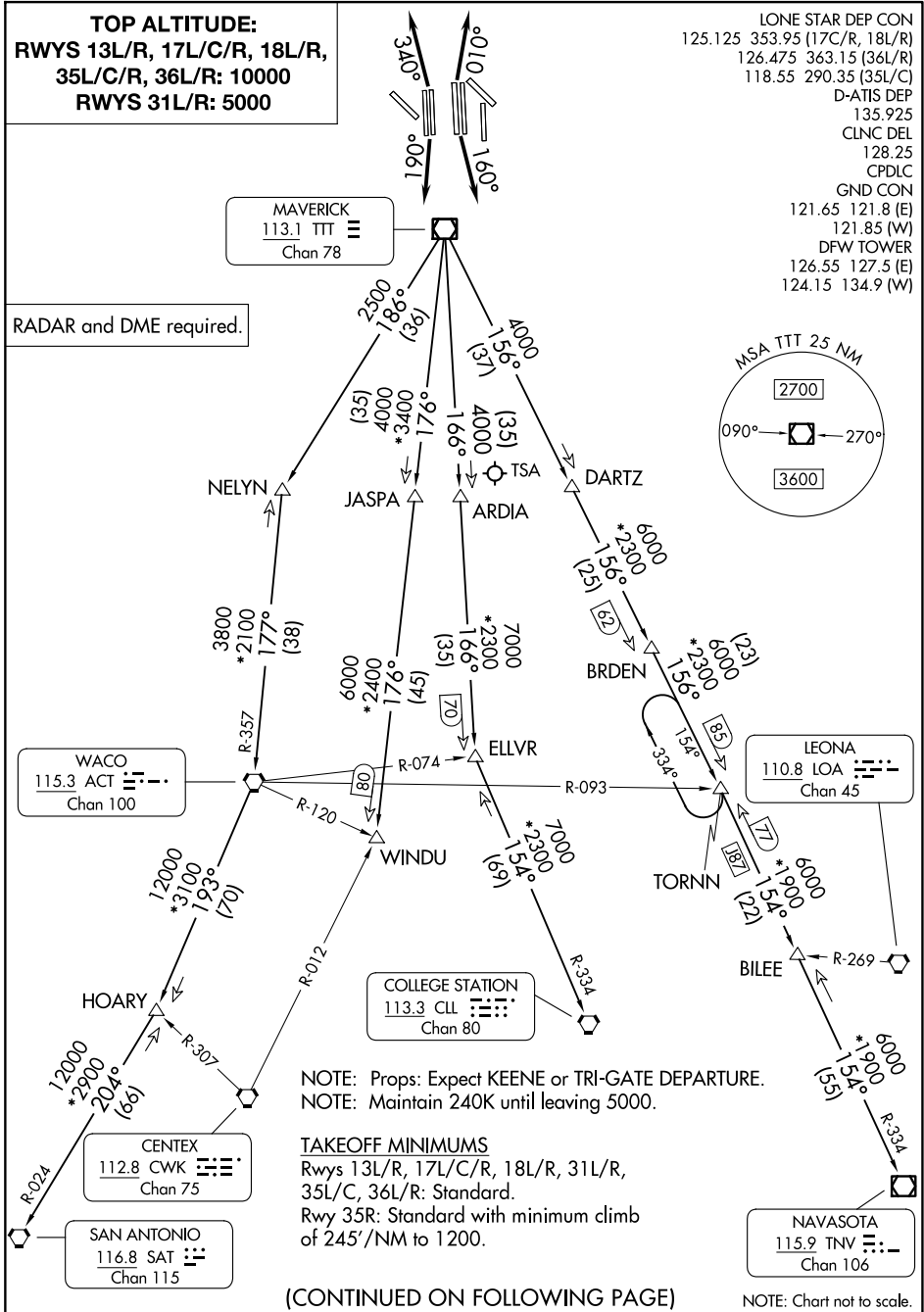


RADAR and DME required.



SC-2, 14 MAY 2026 to 11 JUN 2026

SC-2, 14 MAY 2026 to 11 JUN 2026



NOTE: Props: Expect KEENE or TRI-GATE DEPARTURE.
 NOTE: Maintain 240K until leaving 5000.

TAKEOFF MINIMUMS

Rwys 13L/R, 17L/C/R, 18L/R, 31L/R,
 35L/C, 36L/R: Standard.
 Rwy 35R: Standard with minimum climb
 of 245'/NM to 1200.

(CONTINUED ON FOLLOWING PAGE)

NOTE: Chart not to scale.

JOE POOL EIGHT DEPARTURE