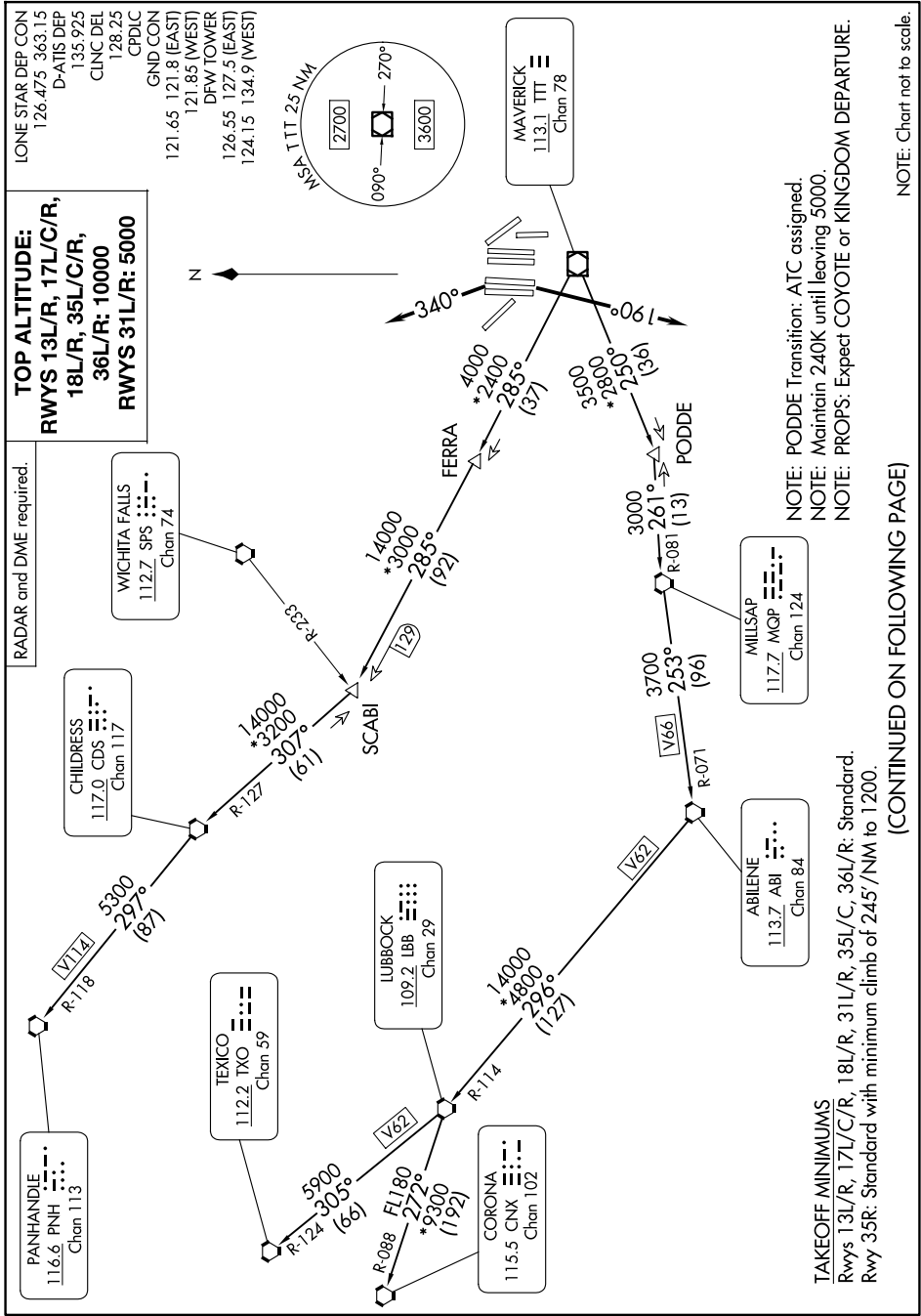


# WORTH ONE DEPARTURE



**TOP ALTITUDE:**  
**RWYS 13L/R, 17L/C/R,**  
**18L/R, 35L/C/R,**  
**36L/R: 10000**  
**RWYS 31L/R: 5000**

RADAR and DME required.

TAKEOFF MINIMUMS  
 Rwys 13L/R, 17L/C/R, 18L/R, 31L/R, 35L/C, 36L/R: Standard.  
 Rwy 35R: Standard with minimum climb of 245'/NM to 1200.

NOTE: PODDE Transition: ATC assigned.  
 NOTE: Maintain 240K until leaving 5000.  
 NOTE: PROPS: Expect COYOTE or KINGDOM DEPARTURE.

(CONTINUED ON FOLLOWING PAGE)

NOTE: Chart not to scale.

# WORTH ONE DEPARTURE