

WAAS CH 82041 W10A	APP CRS 096°	Rwy Ldg TDZE Apt Elev	4201 1089 1090
--	------------------------	-----------------------------	---

RNAV (GPS) RWY 10

NEW CASTLE HENRY COUNTY MARLATT FLD (UWL)

RNP APCH - GPS.

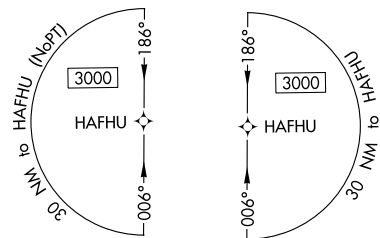
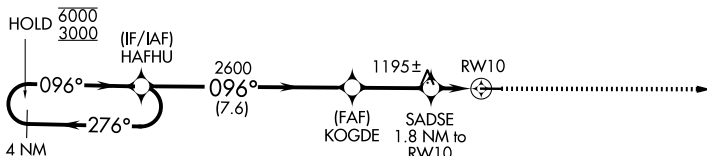
⚠ Rwy 10 helicopter visibility reduction below $\frac{3}{4}$ SM NA. For uncompensated Baro-VNAV systems, LNAV/VNAV NA below -17°C or above 54°C. Baro-VNAV and VDP NA when using AID altimeter setting. When local altimeter setting not received, use AID altimeter setting and increase LPV DA to 1408 feet; increase LNAV/VNAV DA to 1424 feet; increase all MDAs 80 feet and LNAV visibility Cats C and D $\frac{3}{8}$ SM, and Circling visibility Cats C and D $\frac{1}{2}$ SM.

MISSED APPROACH:
Climb to 3000 direct TASUY and hold.

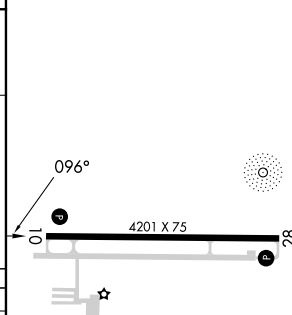
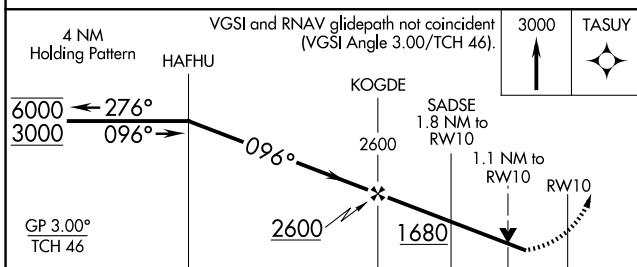
AWOS-3
132.375

INDIANAPOLIS APP CON
135.45 317.8

UNICOM
123.05 (CTAF) 0



ELEV 1090 | TDZE 1089



CATEGORY	A	B	C	D
LPV DA		1339-1	250 (300-1)	
LNAV/VNAV DA		1355-1	266 (300-1)	
LNAV MDA		1460-1	371 (400-1)	
CIRCLING	1520-1 430 (500-1)	1540-1 450 (500-1)	1760-1 $\frac{3}{4}$ 670 (700-1 $\frac{3}{4}$)	1760-2 670 (700-2)

MIRL Rwy 10-28 0
REIL Rwy 10 and 28 0

EC-2, 14 MAY 2026 to 11 JUN 2026

EC-2, 14 MAY 2026 to 11 JUN 2026