

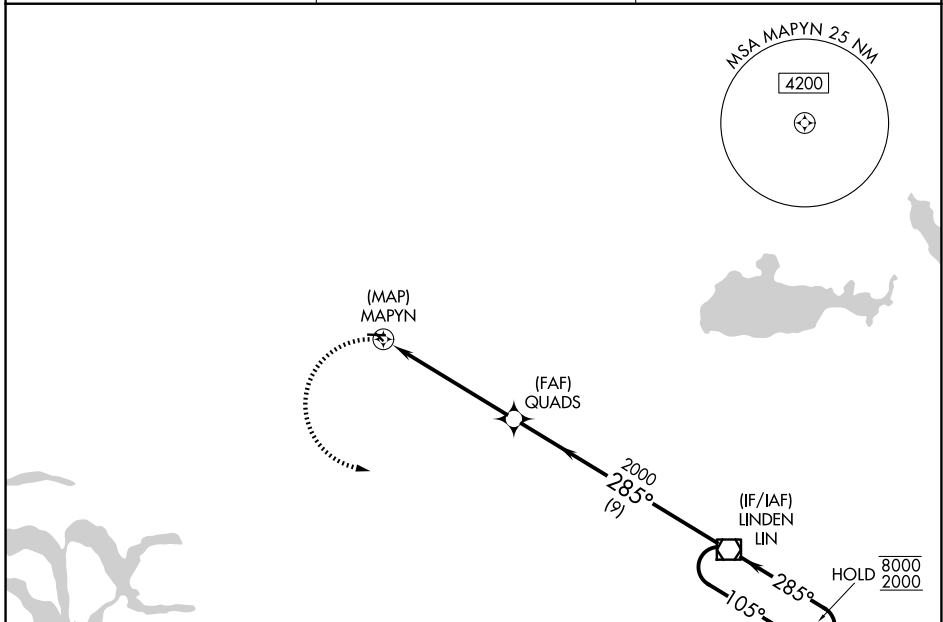
APP CRS 285°	Rwy Ldg TDZE Apt Elev	N/A N/A 60
------------------------	-----------------------------	---------------------------------------

RNAV (GPS)-B

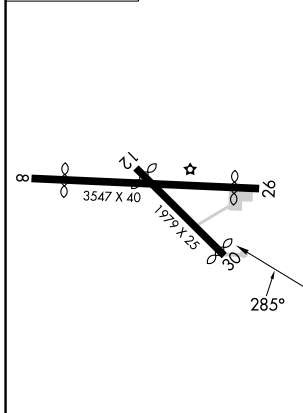
LODI (103)

RNP APCH.	MISSED APPROACH: Climbing left turn to 2000 direct LIN VOR/DME and hold.
Procedure NA at night. Use Stockton altimeter setting; when not received, use Sacramento Intl altimeter setting and increase all MDA 40 feet.	

SCK ASOS 118.25	NORCAL APP CON 125.1 363.2	CTAF 122.9
---------------------------	--------------------------------------	----------------------



ELEV 60



	2000	LIN	QUADS	LIN VOR/DME	4 NM Holding Pattern
			285°	105°	8000
			2000	285°	2000
		5.5 NM	9 NM		
CATEGORY	A	B	C	D	
CIRCLING	640-1	580 (600-1)			NA

SW-2, 14 MAY 2026 to 11 JUN 2026

SW-2, 14 MAY 2026 to 11 JUN 2026