

# WYLSN EIGHT DEPARTURE (RNAV)

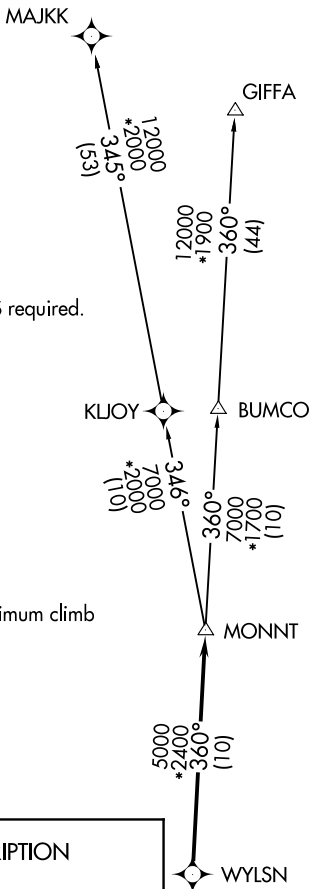
AWOS-3  
119.325  
CTAF  
123.0  
HOUSTON DEP CON  
119.7 281.4

**TOP ALTITUDE:  
ASSIGNED BY ATC**

NOTE: RADAR required.  
NOTE: DME/DME/IRU or GPS required.  
NOTE: RNAV 1.

TAKEOFF MINIMUMS

Rwy 16, 34: Standard with minimum climb of 500' per NM to 660.



### DEPARTURE ROUTE DESCRIPTION

TAKEOFF RUNWAY 16: Climb on heading 157° to 1400 for RADAR vectors to WYLSN, thence. . . .

TAKEOFF RUNWAY 34: Climb on heading 312° to 2000 for RADAR vectors to WYLSN, thence. . . .

. . . .on track 360° to MONNT, then on (transition). Maintain ATC assigned altitude. Expect filed altitude 10 minutes after departure.

GIFFA TRANSITION (WYLSN8.GIFFA)  
MAJKK TRANSITION (WYLSN8.MAJKK)



NOTE: Chart not to scale.

SC-5, 14 MAY 2026 to 11 JUN 2026

SC-5, 14 MAY 2026 to 11 JUN 2026

# WYLSN EIGHT DEPARTURE (RNAV)