

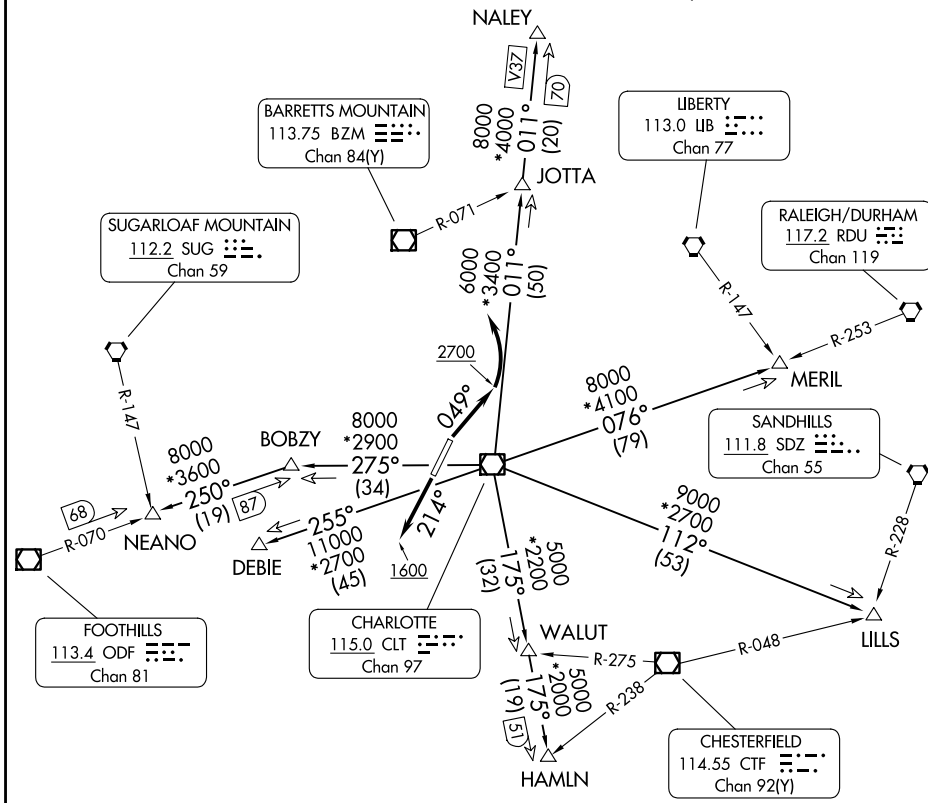
# KERMIT FIVE DEPARTURE

CHARLOTTE DEP CON  
120.05 257.2  
ASOS  
135.725  
CLNC DEL  
127.2

RADAR and DME required.

**TOP ALTITUDE:  
3000**

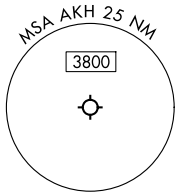
TAKEOFF MINIMUMS  
Rwys 3, 21: Standard.



SE-2, 14 MAY 2026 to 11 JUN 2026

SE-2, 14 MAY 2026 to 11 JUN 2026

- NOTE: Turbojets only.
- NOTE: Upon reaching 10000 MSL, accelerate to and maintain 280K, if unable advise ATC.
- NOTE: Transponder code will be issued via Charlotte clearance delivery.



NOTE: Chart not to scale.

(CONTINUED ON FOLLOWING PAGE)

# KERMIT FIVE DEPARTURE