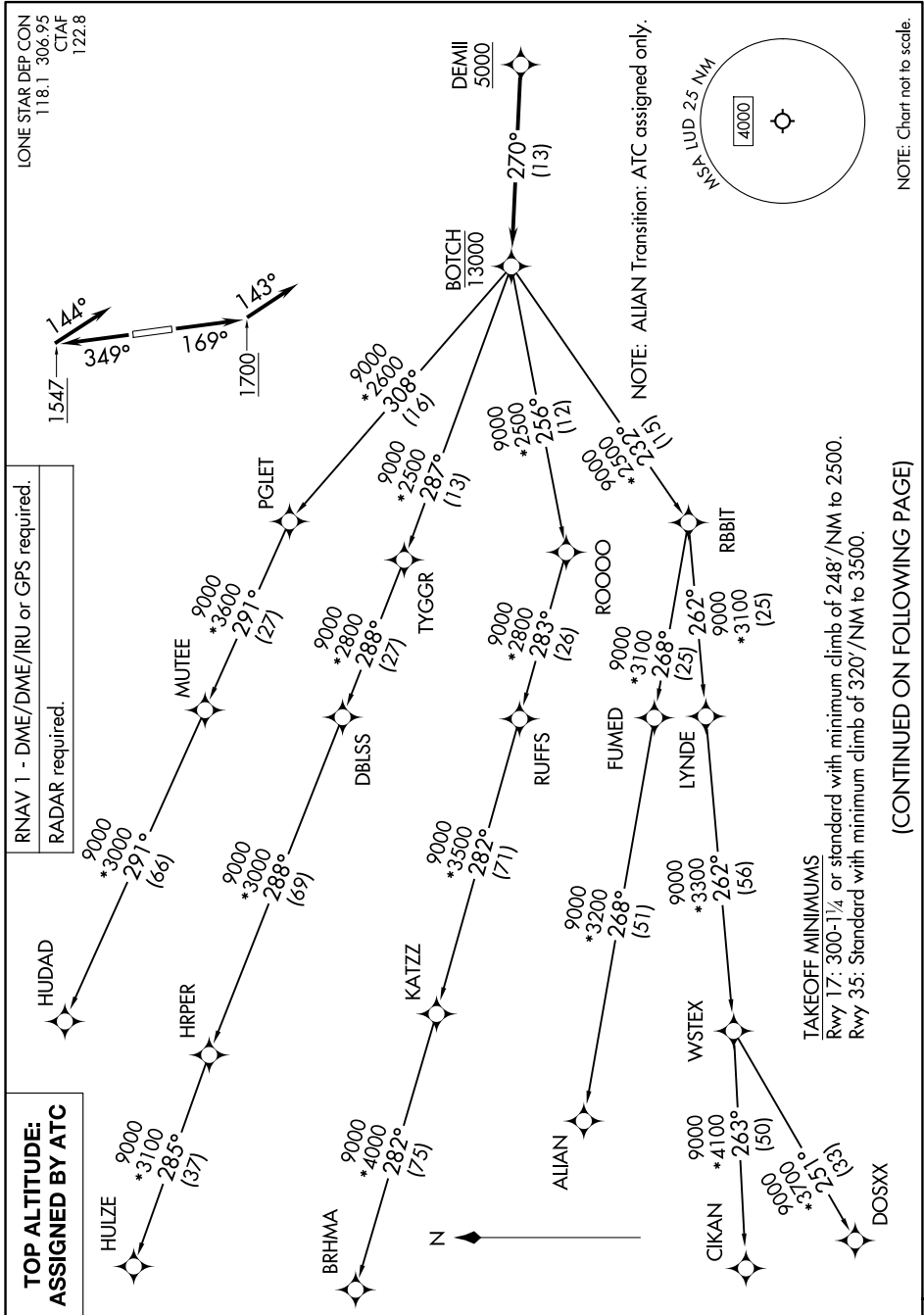


# BOTCH TWO DEPARTURE (RNAV)



SC-2, 14 MAY 2026 to 11 JUN 2026

SC-2, 14 MAY 2026 to 11 JUN 2026

(CONTINUED ON FOLLOWING PAGE)

**TAKEOFF MINIMUMS**  
 Rwy 17: 300-1/4 or standard with minimum climb of 248'/NM to 2500.  
 Rwy 35: Standard with minimum climb of 320'/NM to 3500.

# BOTCH TWO DEPARTURE (RNAV)