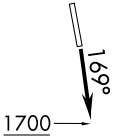
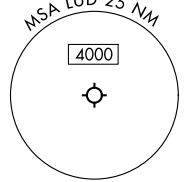


JOE POOL EIGHT DEPARTURE

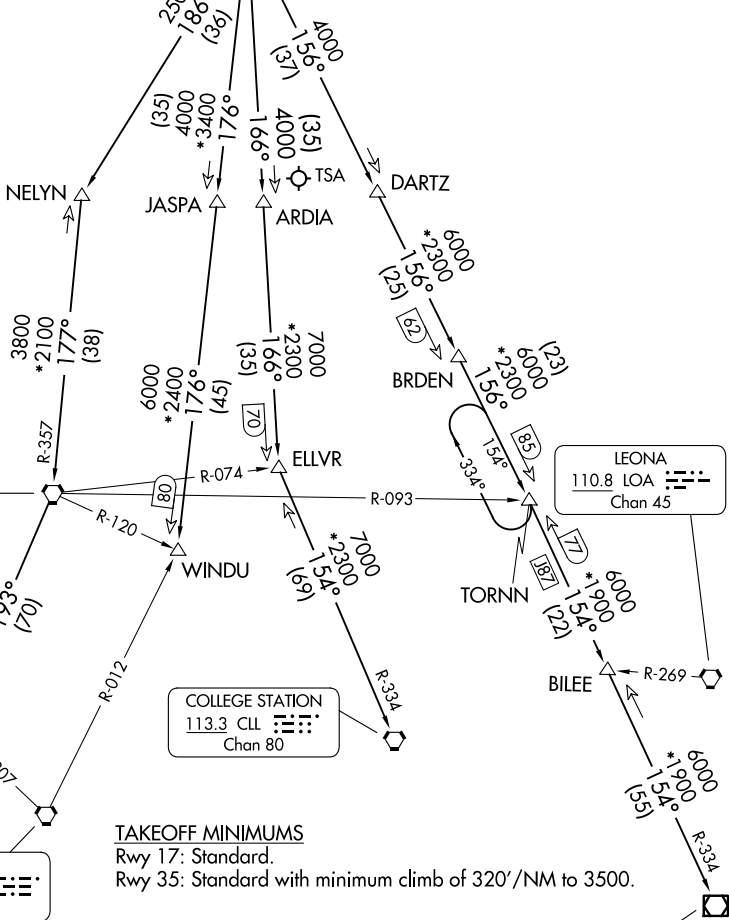
LONE STAR DEP CON
118.1 306.95
CTAF
122.8

RADAR and DME required.

**TOP ALTITUDE:
ASSIGNED BY ATC**



MAVERICK
113.1 TTT
Chan 78



TAKEOFF MINIMUMS
Rwy 17: Standard.
Rwy 35: Standard with minimum climb of 320'/NM to 3500.

(CONTINUED ON FOLLOWING PAGE)

NOTE: Chart not to scale.

SC-2, 14 MAY 2026 to 11 JUN 2026

SC-2, 14 MAY 2026 to 11 JUN 2026

JOE POOL EIGHT DEPARTURE