

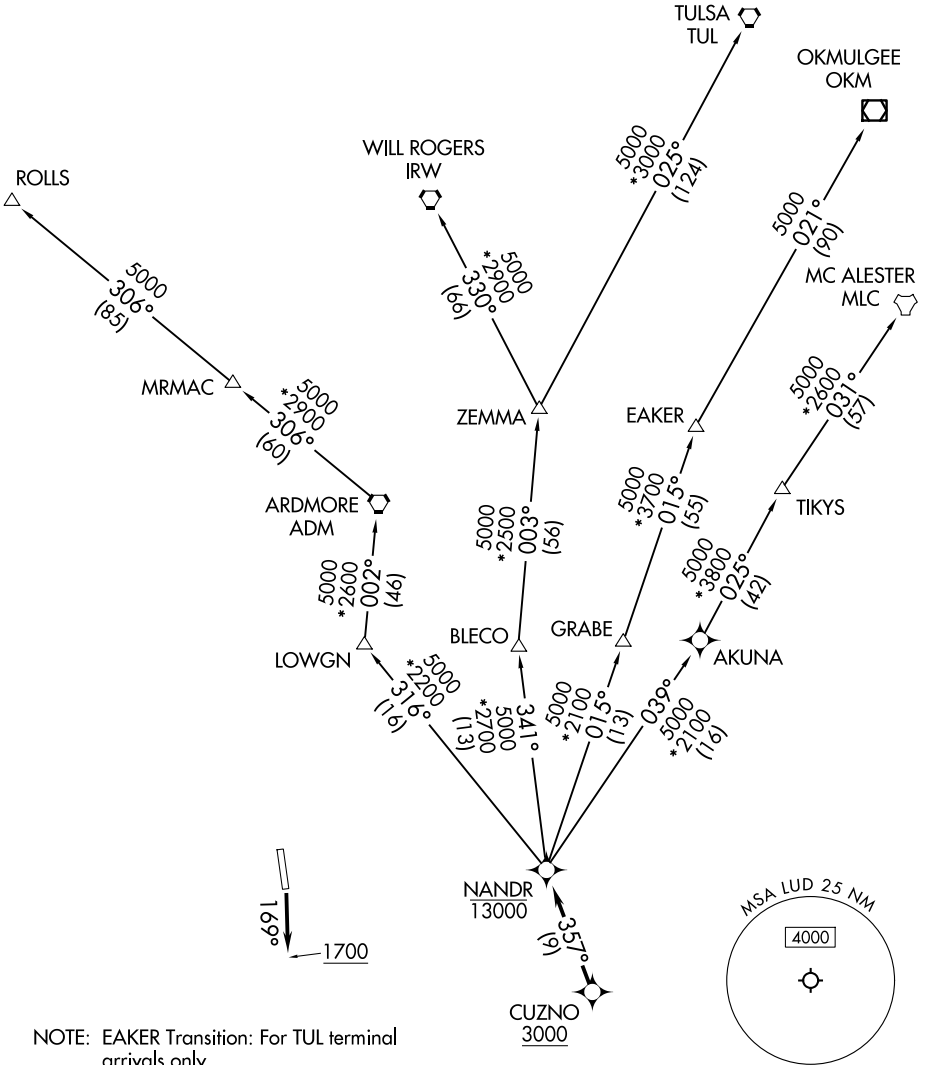
NANDR FOUR DEPARTURE (RNAV)

DECATUR, TEXAS

LONE STAR DEP CON
118.1 306.95
CTAF
122.8

RNAV 1 - DME/DME/IRU or GPS required.
RADAR required.

**TOP ALTITUDE:
ASSIGNED BY ATC**



SC-2, 14 MAY 2026 to 11 JUN 2026

SC-2, 14 MAY 2026 to 11 JUN 2026

- NOTE: EAKER Transition: For TUL terminal arrivals only.
- NOTE: TULSA Transition: For all aircraft overflying TUL VORTAC.
- NOTE: Aircraft arriving to the Oklahoma City terminal area, file and expect the ZEMMA enroute transition.

TAKEOFF MINIMUMS

- Rwy 17: 300-1¼ or standard with minimum climb of 248' /NM to 2500.
- Rwy 35: Standard with minimum climb of 320' /NM to 3500.

NOTE: Chart not to scale.

(CONTINUED ON FOLLOWING PAGE)

NANDR FOUR DEPARTURE (RNAV)

(NANDR4.NANDR) 14MAY26

DECATUR, TEXAS

DECATUR MUNI (LUD)