

WAAS CH <b>86231</b> <b>W16A</b>	APP CRS <b>156°</b>	Rwy Ldg TDZE Apt Elev	<b>4435</b> <b>1459</b> <b>1478</b>
--	------------------------	-----------------------------	---

# RNAV (GPS) RWY 16

TAYLOR COUNTY (MDZ)

RNP APCH.

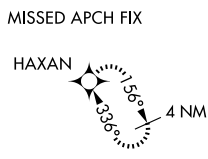
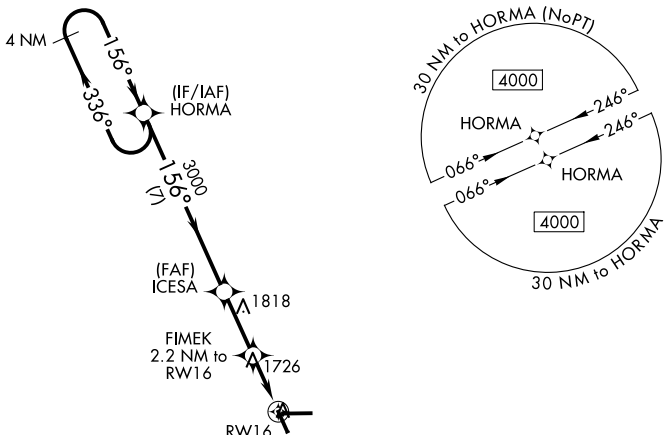
**⚠** When local altimeter setting not received, use Merrill altimeter setting and increase all MDA 100 feet and increase all Cat C/D visibility ¼ mile. Rwy 16 helicopter visibility reduction below ¼ SM NA. VDP NA when using Merrill altimeter setting.

**MISSED APPROACH:**  
Climb to 4000 direct HAXAN and hold.

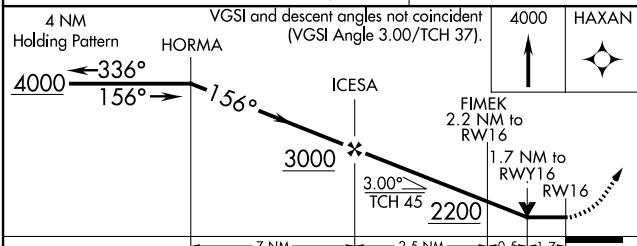
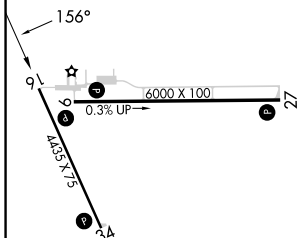
AWOS-3  
**119.025**

MINNEAPOLIS CENTER  
**124.4 317.7**

UNICOM  
**122.8 (CTAF) Ⓛ**



ELEV 1478	TDZE 1459
-----------	-----------



CATEGORY	A	B	C	D
LP MDA	2040-1	581 (600-1)	2040-1¾	581 (600-1¾)
LNAV MDA	2060-1	601 (600-1)	2060-1¾	601 (600-1¾)
CIRCLING	2060-1	582 (600-1)	2060-1¾	2180-2¼ 702 (800-2¼)

REIL Rwys 9, 27 and 34 Ⓛ  
MIRL Rwys 9-27 and 16-34 Ⓛ

EC-3, 14 MAY 2026 to 11 JUN 2026

EC-3, 14 MAY 2026 to 11 JUN 2026