

WAAS CH <b>45544</b> <b>W24A</b>	APP CRS <b>241°</b>	Rwy Idg TDZE Apt Elev	<b>3471</b> <b>790</b> <b>790</b>
--	------------------------	-----------------------------	---

# RNAV (GPS) RWY 24

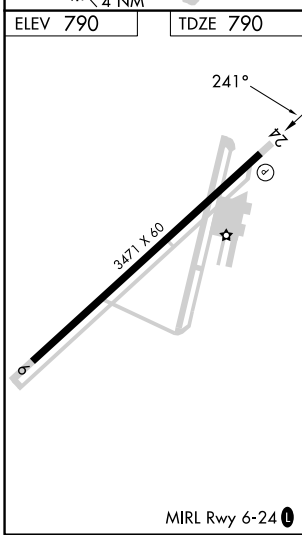
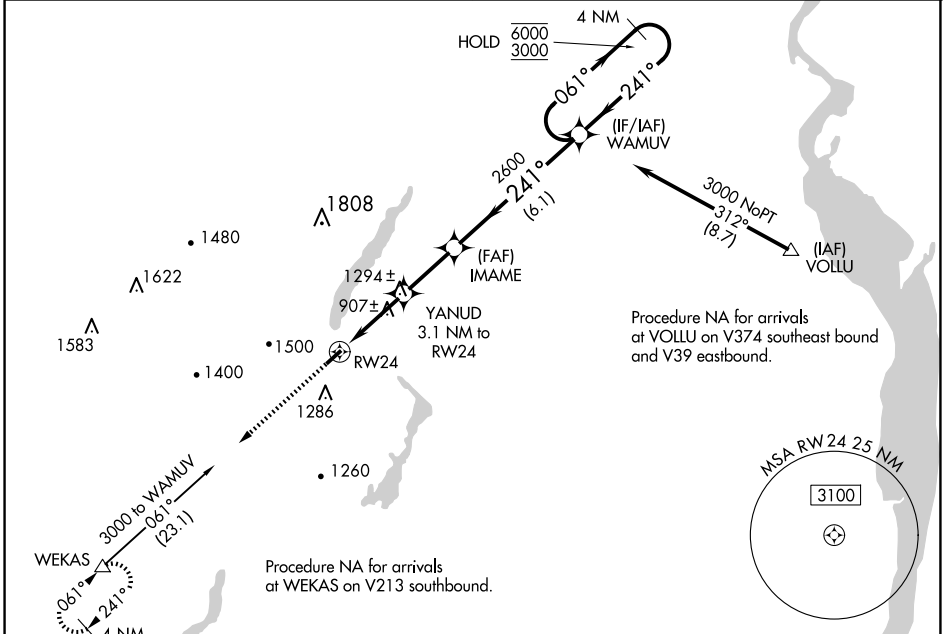
GREENWOOD LAKE (4N1)

RNP APCH - GPS.

▼ Obtain local altimeter setting on CTAF; when not received, use Sussex altimeter setting.  
 ▲ NA Rwy 24 helicopter visibility reduction below 1 SM NA. Procedure NA at night.

MISSED APPROACH: Climb to 3000 direct WEKAS and hold.

NEWARK APP CON <b>127.6 379.9</b>	CTAF <b>122.9 0</b>
--------------------------------------	------------------------



ELEV 790	TDZE 790	3000	WEKAS	Visual Segment - Obstacles.	4 NM
		↑	△		Holding Pattern
				IMAME	WAMUV
				YANUD 3.1 NM to RWY 24	061° → 6000
				RWY 24	← 241° 3000
				1820	
				2600	
				3.1 NM	2.5 NM
				6.1 NM	
CATEGORY	A	B	C	D	
LP MDA	1160-1	370 (400-1)		NA	
LNAV MDA	1560-1	1560-1¼		NA	
	771 (800-1)	771 (800-1¼)			
CIRCLING	1600-1	1720-1¼		NA	
	810 (900-1)	930 (1000-1¼)			
SUSSEX ALTIMETER SETTING MINIMUMS					
LP MDA	1240-1	450 (500-1)		NA	
LNAV MDA	1640-1	1640-1¼		NA	
	851 (900-1)	851 (900-1¼)			
CIRCLING	1700-1¼	1820-1½		NA	
	910 (1000-1¼)	1030 (1100-1½)			

NE-2, 14 MAY 2026 to 11 JUN 2026

NE-2, 14 MAY 2026 to 11 JUN 2026