

NANDR FOUR DEPARTURE (RNAV)

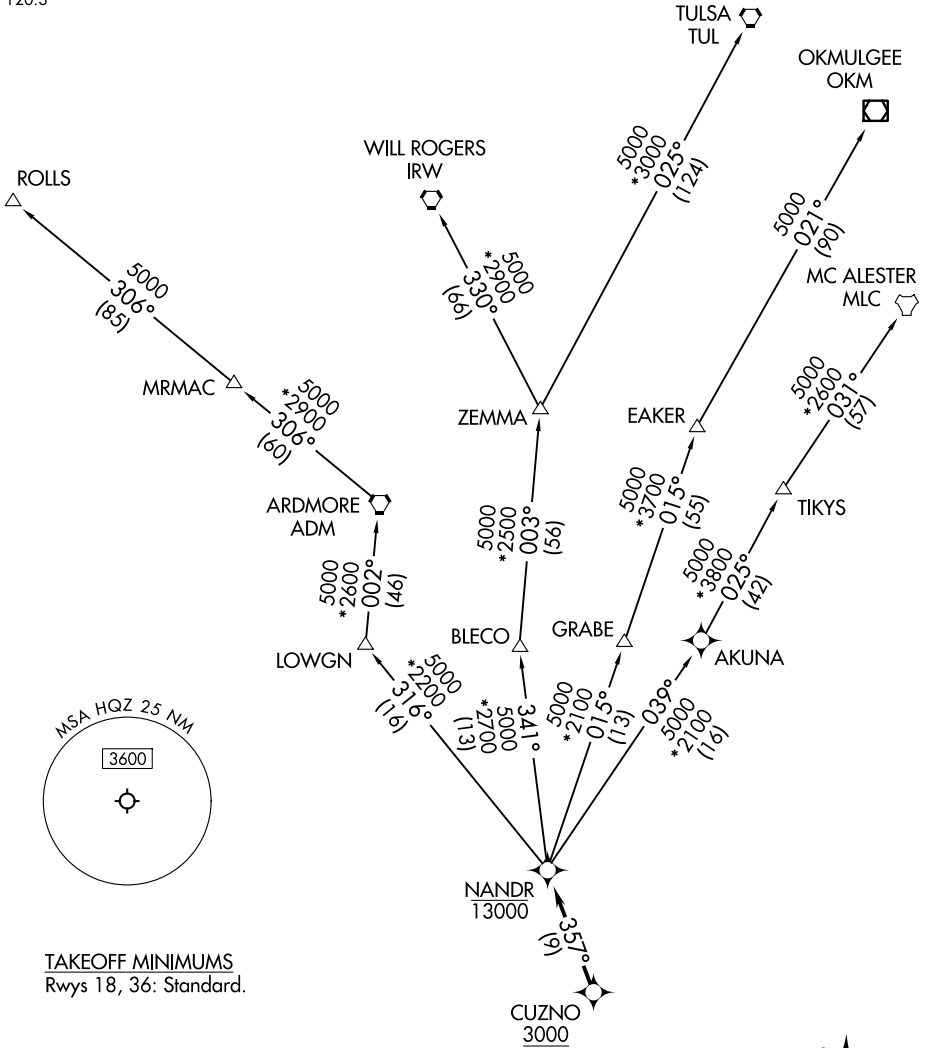
MESQUITE, TEXAS

LONE STAR DEP CON
125.2 343.65 (18)
124.3 282.275 (36)
CTAF
120.3

RNAV 1 - DME/DME/IRU or GPS required.

RADAR required.

**TOP ALTITUDE:
ASSIGNED BY ATC**



SC-2, 14 MAY 2026 to 11 JUN 2026

SC-2, 14 MAY 2026 to 11 JUN 2026

NOTE: Chart not to scale.

(CONTINUED ON FOLLOWING PAGE)

NANDR FOUR DEPARTURE (RNAV)

(NANDR4.NANDR) 14MAY26

MESQUITE, TEXAS
MESQUITE METRO (HQZ)