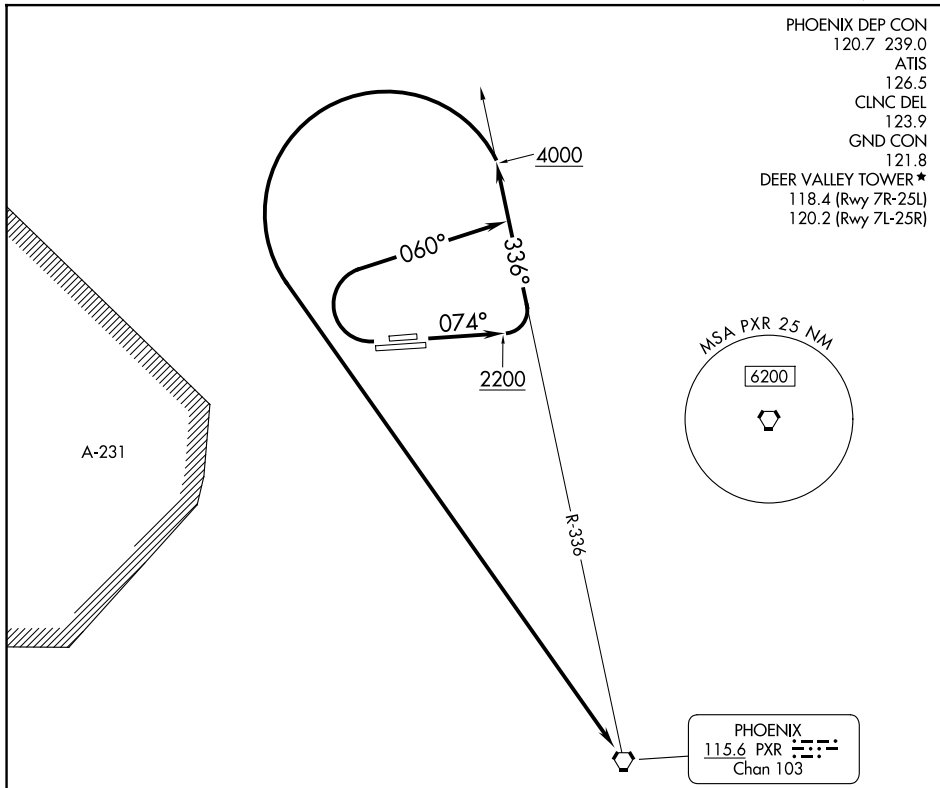


# DEER VALLEY THREE DEPARTURE (OBSTACLE)

PHOENIX DEP CON  
120.7 239.0  
ATIS  
126.5  
CLNC DEL  
123.9  
GND CON  
121.8  
DEER VALLEY TOWER ★  
118.4 (Rwy 7R-25L)  
120.2 (Rwy 7L-25R)



### TAKEOFF MINIMUMS

- Rwy 7L: Standard with minimum climb of 400' per NM to 2200.
- Rwy 7R: Standard with minimum climb of 675' per NM to 1800.
- Rwy 25L: Standard with minimum climb of 265' per NM to 2600.
- Rwy 25R: Standard with minimum climb of 285' per NM to 2600.

(CONTINUED ON FOLLOWING PAGE)

NOTE: Chart not to scale.

### DEPARTURE ROUTE DESCRIPTION

**TAKEOFF RUNWAYS 7L/R:** Climb on heading 074° to 2200, then climbing left turn on PXR VORTAC R-336 northwest bound to 4000, thence. . . .

**TAKEOFF RUNWAYS 25L/R:** Climbing right turn on heading 060° and PXR VORTAC R-336 northwest bound to 4000, thence. . . .

. . . . left turn direct PXR VORTAC.

# DEER VALLEY THREE DEPARTURE (OBSTACLE)