

# KNIGHTS FOUR DEPARTURE

CHARLOTTE DEP CON  
128.325 307.8  
AWOS-3  
128.175  
CLNC DEL  
121.75 254.375  
GND CON  
121.75 254.375  
STANLEY COUNTY TOWER ★  
126.275 (CTAF) 291.9

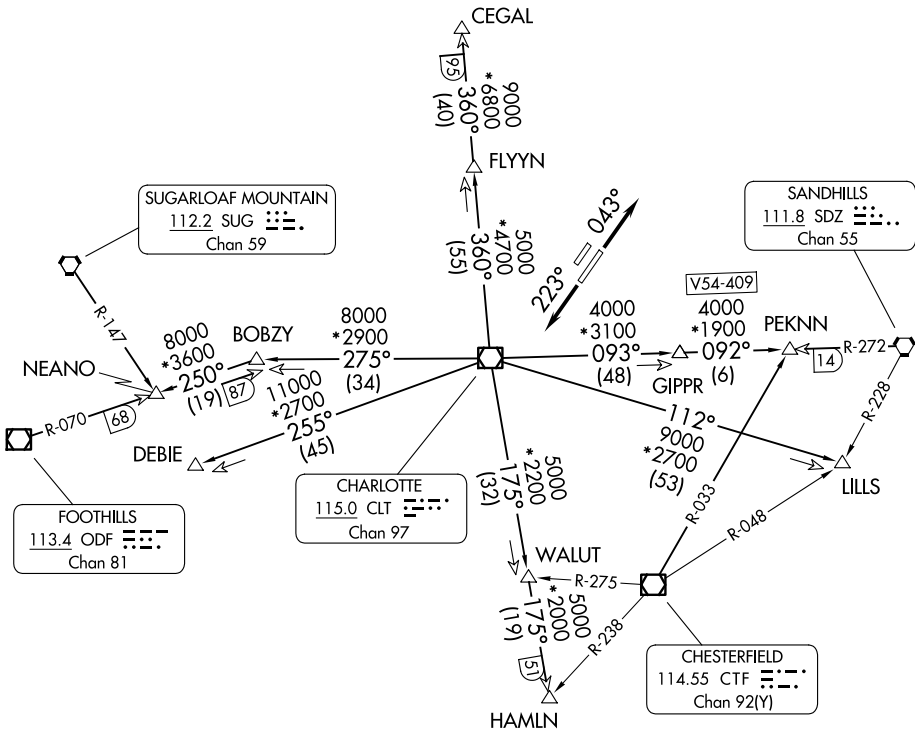
RADAR and DME required.

**TOP ALTITUDE:  
3000**

### TAKEOFF MINIMUMS

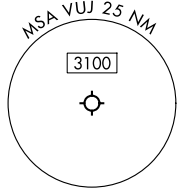
Rwys 4L, 22R: NA-Environmental.  
Rwy 22L: Standard.

Rwy 4R: 300-1¾ or standard with minimum  
climb of 315'/NM to 1000.



SE-2, 14 MAY 2026 to 11 JUN 2026

SE-2, 14 MAY 2026 to 11 JUN 2026



- NOTE: Props only.
- NOTE: Turboprops: Operate in a manner that will result in best forward speed and climb rate.
- NOTE: Transponder code will be issued via Charlotte clearance delivery.

(CONTINUED ON FOLLOWING PAGE)

NOTE: Chart not to scale.

# KNIGHTS FOUR DEPARTURE