

GARLAND SIX DEPARTURE

(CONTINUED ON FOLLOWING PAGE)

LONE STAR DEP CON
135.975 379.9
CTAF
123.0

**TOP ALTITUDE:
ASSIGNED BY ATC**

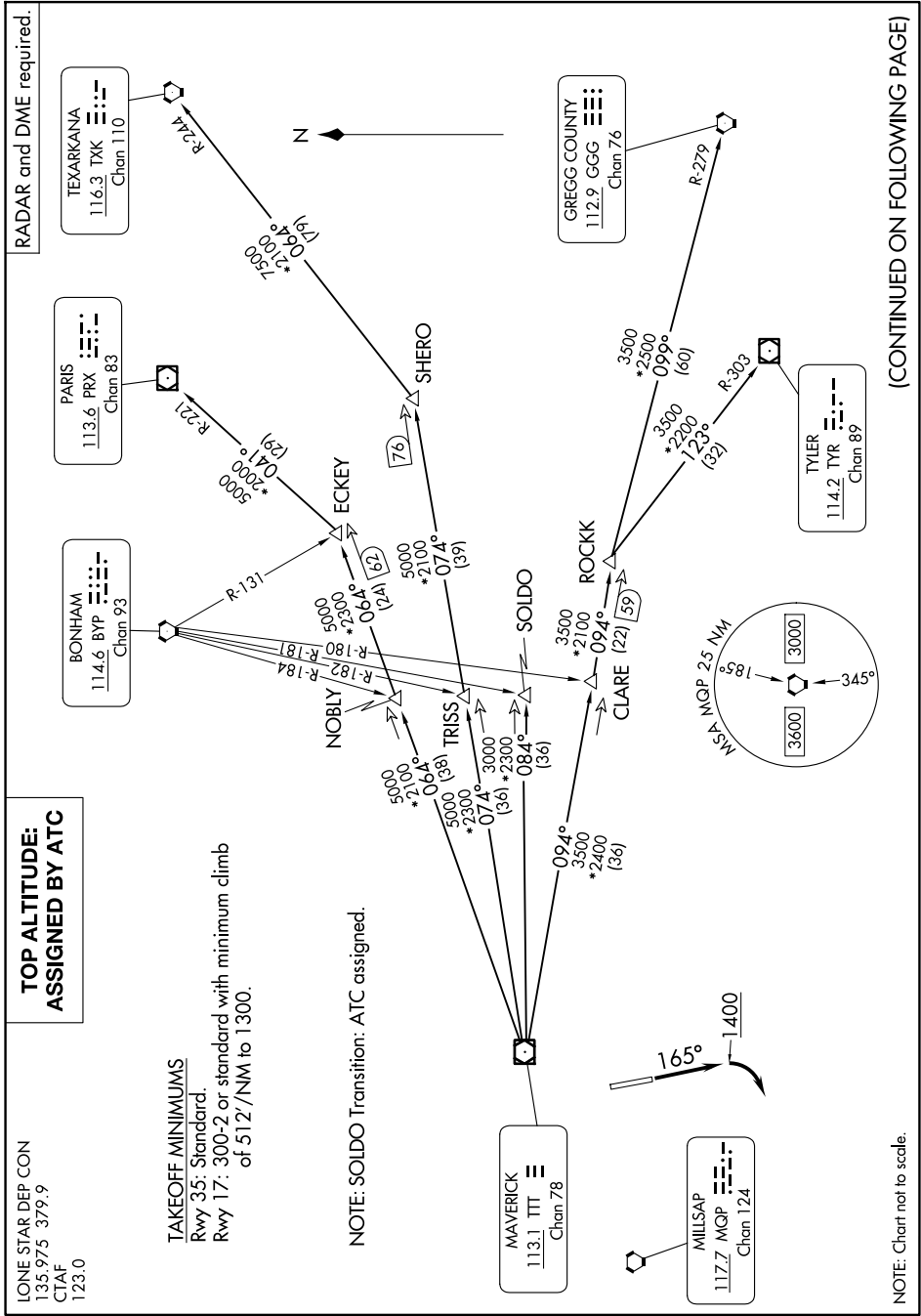
RADAR and DME required.

TAKEOFF MINIMUMS

Rwy 35: Standard.
Rwy 17: 300-2 or standard with minimum climb
of 512'/NM to 1300.

NOTE: SOLDO Transition: ATC assigned.

NOTE: Chart not to scale.



SC-2, 14 MAY 2026 to 11 JUN 2026

SC-2, 14 MAY 2026 to 11 JUN 2026