

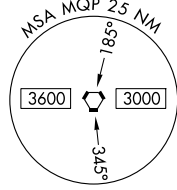
JOE POOL EIGHT DEPARTURE

FORT WORTH, TEXAS

LONE STAR DEP CON
125.8 257.95
CTAF
123.0

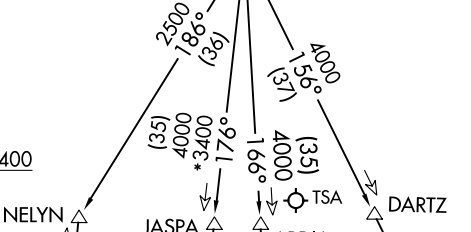
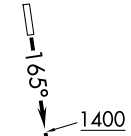
RADAR and DME required.

**TOP ALTITUDE:
ASSIGNED BY ATC**



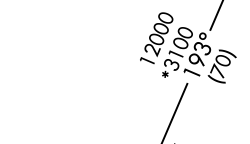
MILLSAP
117.7 MQP
Chan 124

MAVERICK
113.1 TTT
Chan 78



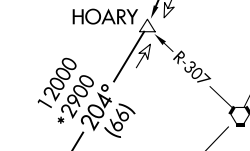
WACO
115.3 ACT
Chan 100

LEONA
110.8 LOA
Chan 45



COLLEGE STATION
113.3 CLL
Chan 80

TAKEOFF MINIMUMS
Rwy 35: Standard.
Rwy 17: 300-1⁷/₈ or standard with minimum
climb of 512'/NM to 1300.



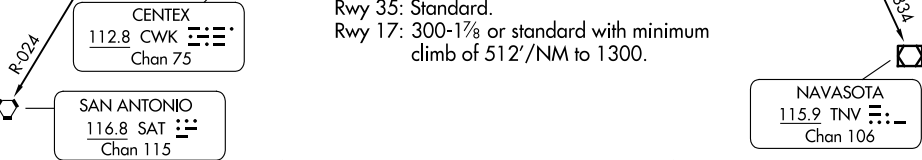
CENTEX
112.8 CWK
Chan 75

SAN ANTONIO
116.8 SAT
Chan 115



LEONA
110.8 LOA
Chan 45

NAVASOTA
115.9 TNV
Chan 106



(CONTINUED ON FOLLOWING PAGE)

NOTE: Chart not to scale.

JOE POOL EIGHT DEPARTURE

SC-2, 14 MAY 2026 to 11 JUN 2026

SC-2, 14 MAY 2026 to 11 JUN 2026