

SKYEE ONE DEPARTURE (RNAV)

AL-9041 (FAA)

VANCE BRAND (LMO)
LONGMONT, COLORADO

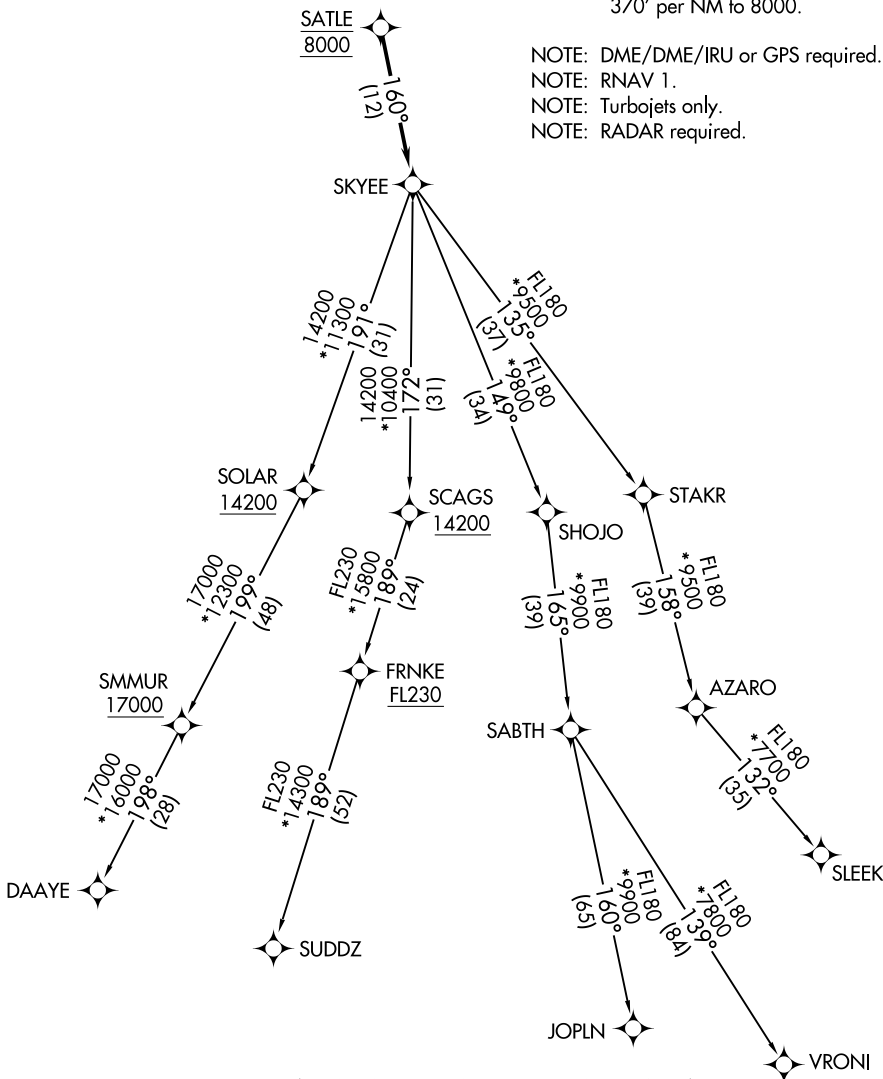
DENVER DEP CON
125.125 263.025

**TOP ALTITUDE:
FL230**

TAKEOFF MINIMUMS

Rwy 11: Standard.
Rwy 29: Standard with minimum climb of
370' per NM to 8000.

NOTE: DME/DME/IRU or GPS required.
NOTE: RNAV 1.
NOTE: Turbojets only.
NOTE: RADAR required.



NOTE: Chart not to scale.

(CONTINUED ON FOLLOWING PAGE)

SW-1, 14 MAY 2026 to 11 JUN 2026

SW-1, 14 MAY 2026 to 11 JUN 2026

SKYEE ONE DEPARTURE (RNAV)