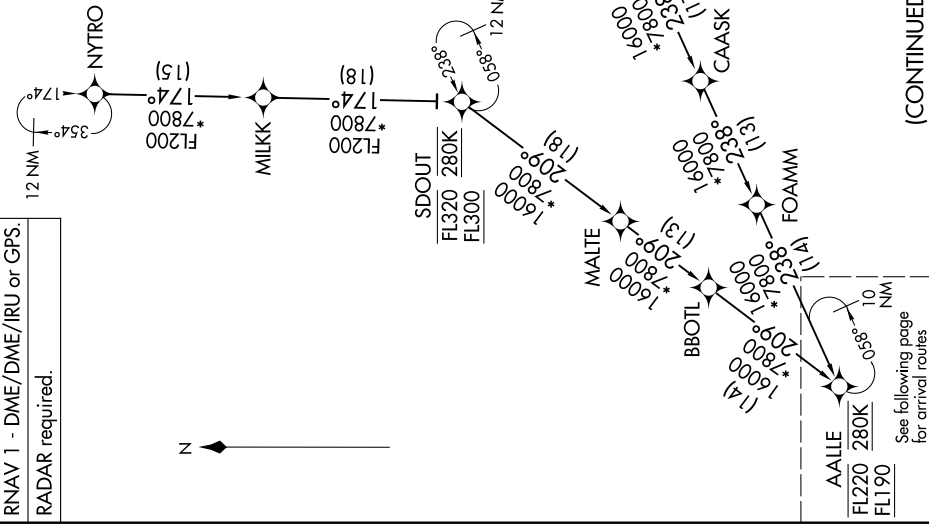


AALLE FOUR ARRIVAL (RNAV) Transition Routes

SW-1, 14 MAY 2026 to 11 JUN 2026

DENVER APP CON
124.95 346.4
D-ATIS ARR
125.6 379.9
DENVER TOWER
128.75 273.55 (Rwy 7-25)
132.35 239.275 (Rwys 8-26, 17L-35R)
124.3 322.45 (Rwy 17R-35L)
135.3 351.95 (Rwys 16L-34R, 16R-34L)

NOTE: Jet aircraft only.
NOTE: BBOTL, FOAMM, MALTE, CAASK, AALLE, BIDDR, HOPPP, MILKK, SDOUT and YEAST Transitions, ATC assigned only.
NOTE: Denver Center will issue "descend via" clearance and landing direction.
NOTE: Expect runway assignment on initial contact with Denver TRACON.
NOTE: Landing North select Rwy 35R Transition.
NOTE: Landing South select Rwy 16L Transition.
NOTE: Landing East select Rwy 7 Transition.
NOTE: Landing West select Rwy 26 Transition.



- NOTE: Chart not to scale.
- BBOTL TRANSITION (BBOTL.AALLE4)
 - BIDDR TRANSITION (BIDDR.AALLE4)
 - CAASK TRANSITION (CAASK.AALLE4)
 - FOAMM TRANSITION (FOAMM.AALLE4)
 - HOPPP TRANSITION (HOPPP.AALLE4)
 - MALTE TRANSITION (MALTE.AALLE4)
 - MILKK TRANSITION (MILKK.AALLE4)
 - NYTRO TRANSITION (NYTRO.AALLE4)
 - PORDR TRANSITION (PORDR.AALLE4)
 - SDOUT TRANSITION (SDOUT.AALLE4)
 - YEAST TRANSITION (YEAST.AALLE4)

(CONTINUED ON FOLLOWING PAGE)

SW-1, 14 MAY 2026 to 11 JUN 2026

AALLE FOUR ARRIVAL (RNAV) Transition Routes