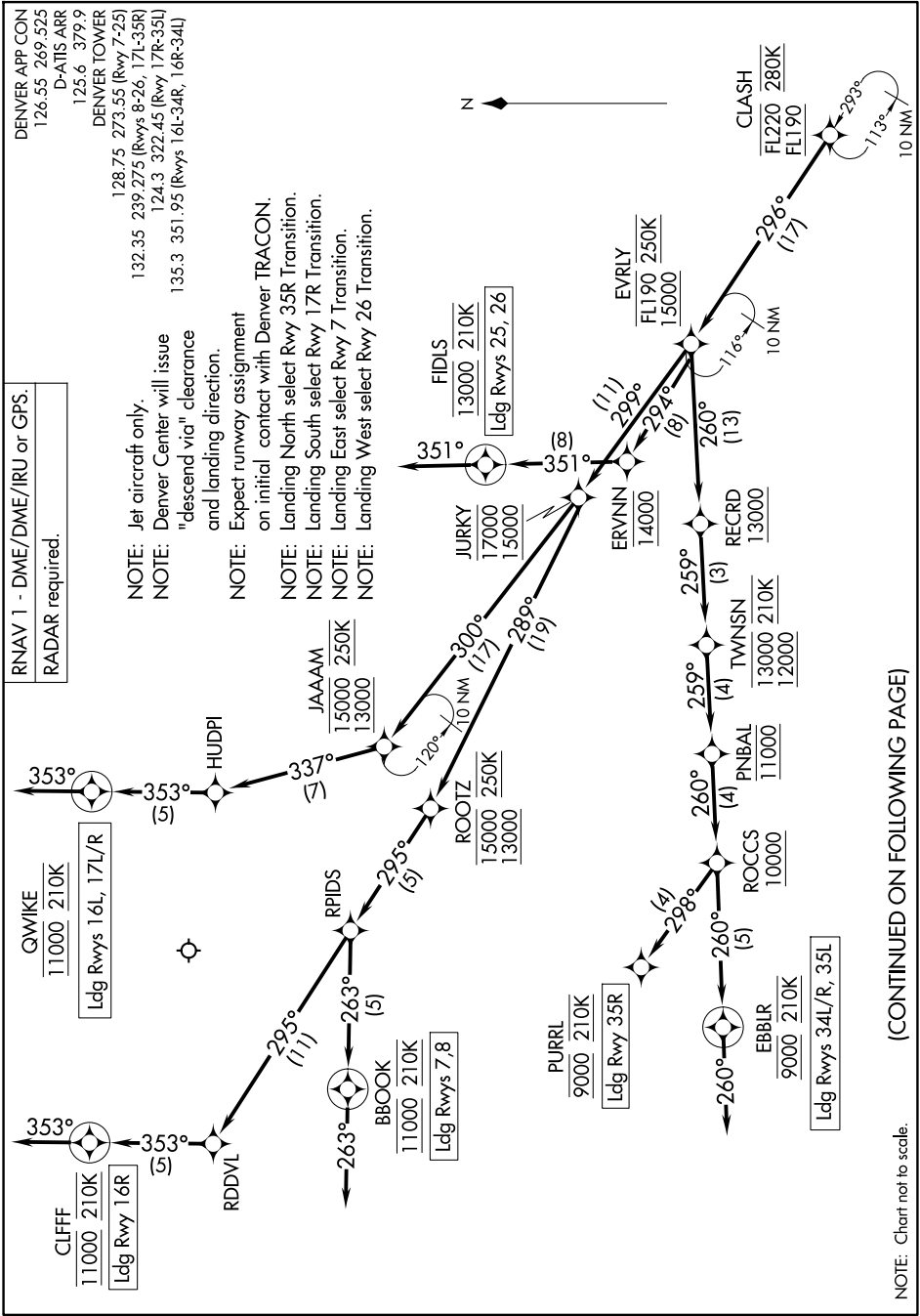


CLASH FIVE ARRIVAL (RNAV) Arrival Routes

SW-1, 14 MAY 2026 to 11 JUN 2026



RNAV 1 - DME/DME/IRU or GPS.
RADAR required.

- NOTE: Jet aircraft only.
- NOTE: Denver Center will issue "descend via" clearance and landing direction.
- NOTE: Expect runway assignment on initial contact with Denver TRACON.
- NOTE: Landing North select Rwy 35R Transition.
- NOTE: Landing South select Rwy 17R Transition.
- NOTE: Landing East select Rwy 7 Transition.
- NOTE: Landing West select Rwy 26 Transition.

CLIFF
11000 210K
Ldg Rwy 16R

QWIKI
11000 210K
Ldg Rwys 16L, 17L/R

NOTE: Chart not to scale. (CONTINUED ON FOLLOWING PAGE)

SW-1, 14 MAY 2026 to 11 JUN 2026