

# FLATI FIVE ARRIVAL (RNAV) Transition Routes

SW-1, 14 MAY 2026 to 11 JUN 2026

RNAV 1 - DME/DME/IRU or GPS.  
RADAR required.

DENVER APP CON  
119.3 307.3  
D-ATIS ARR  
125.6 379.9  
DENVER TOWER  
128.75 273.55 (Rwy 7-25)  
132.35 239.275 (Rwys 8-26, 17L-35R)  
124.3 322.45 (Rwy 17R-35L)  
135.3 351.95 (Rwys 16L-34R, 16R-34L)

NOTE: Jet aircraft only.

NOTE: FOLSM, GNOLA, HIPEE, and

MSTSH Transitions, ATC assigned only.

NOTE: Denver Center will issue "descend via" clearance and landing direction.

NOTE: Expect runway assignment on initial contact with Denver TRACON.

NOTE: Landing North select Rwy 35R Transition.

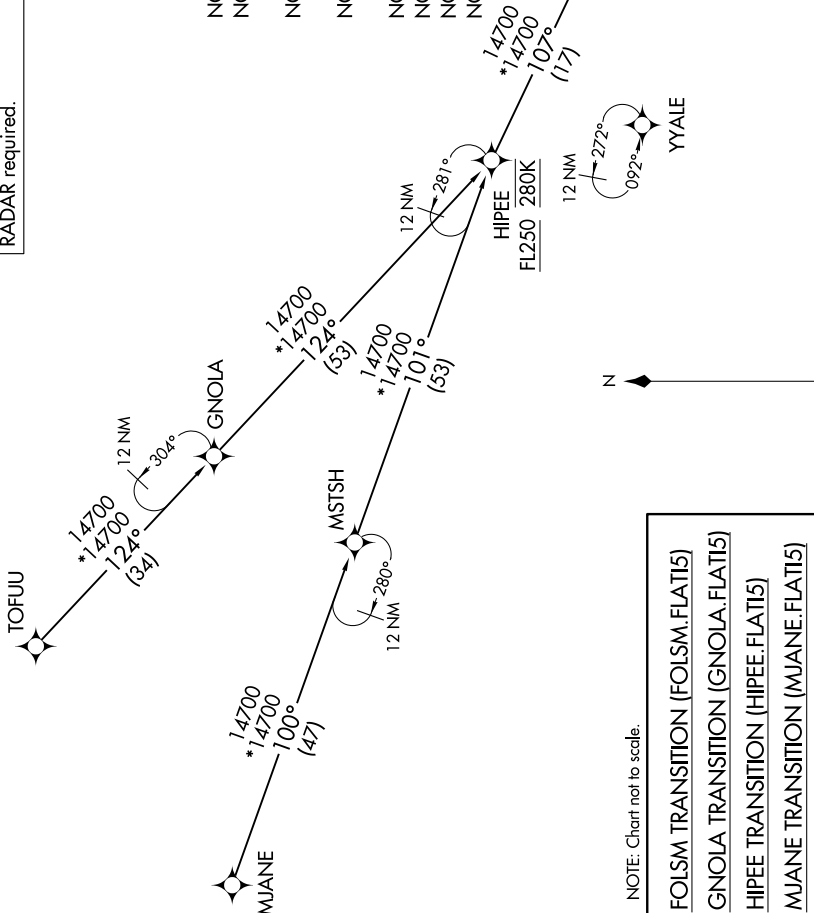
NOTE: Landing South select Rwy 16L Transition.

NOTE: Landing East select Rwy 7 Transition.

NOTE: Landing West select Rwy 26 Transition.

NOTE: Chart not to scale.

- FOLSM TRANSITION (FOLSM.FLATI5)
- GNOLA TRANSITION (GNOLA.FLATI5)
- HIPEE TRANSITION (HIPEE.FLATI5)
- MJANE TRANSITION (MJANE.FLATI5)
- MSTSH TRANSITION (MSTSH.FLATI5)
- TOFUU TRANSITION (TOFUU.FLATI5)



See following page for Arrival Routes

FL220 270K  
FL190

(CONTINUED ON FOLLOWING PAGE)

SW-1, 14 MAY 2026 to 11 JUN 2026