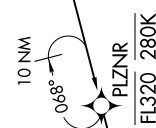
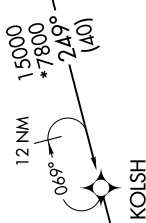
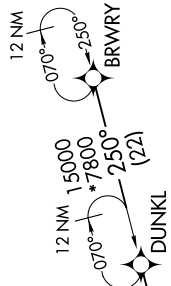
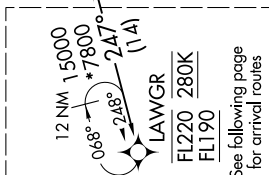
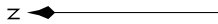


LAWGR FOUR ARRIVAL (RNAV) Transition Routes

SW-1, 14 MAY 2026 to 11 JUN 2026

RNAV 1- DME/DME/IRU or GPS.
RADAR required.

DENVER APP CON
124.95 346.4
D-ATIS ARR
125.6 379.9
DENVER TOWER
128.75 273.55 (Rwy 7-25)
132.35 239.275 (Rwys 8-26, 17L-35R)
124.3 322.45 (Rwy 17R-35L)
135.3 351.95 (Rwys 16L-34R, 16R-34L)



(CONTINUED ON FOLLOWING PAGE)

- BRWRY TRANSITION (BRWRY.LAWGR4)
- DUNKL TRANSITION (DUNKL.LAWGR4)
- KOLSH TRANSITION (KOLSH.LAWGR4)
- MARZN TRANSITION (MARZN.LAWGR4)
- PLZNR TRANSITION (PLZNR.LAWGR4)
- SOOUR TRANSITION (SOOUR.LAWGR4)

NOTE: Jet aircraft only.
NOTE: Denver Center will issue "descend via" clearance and landing direction.
NOTE: DUNKL, KOLSH, PLZNR, SOOUR, MARZN, and LAWGR Transitions, ATC assigned only.
NOTE: Expect runway assignment on initial contact with Denver TRACON.
NOTE: Landing north select Rwy 35R Transition.
NOTE: Landing south select Rwy 17R Transition.
NOTE: Landing east select Rwy 7 Transition.
NOTE: Landing west select Rwy 26 Transition.

NOTE: Chart not to scale.

LAWGR FOUR ARRIVAL (RNAV) Transition Routes

SW-1, 14 MAY 2026 to 11 JUN 2026