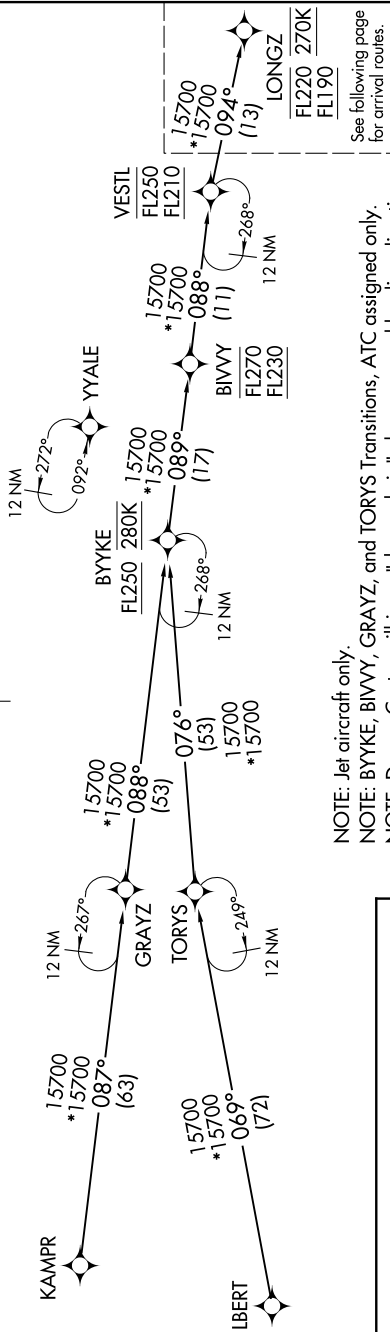


LONGZ FOUR ARRIVAL (RNAV) Transition Routes

SW-1, 14 MAY 2026 to 11 JUN 2026

RNAV 1 - DME/DME/IRU or GPS.
RADAR required.

DENVER APP CON
119.3 307.3
D-ATIS ARR
125.6 379.9
DENVER TOWER
128.75 273.55 (Rwy 7-25)
132.35 239.275 (Rwys 8-26, 17L-35R)
124.3 322.45 (Rwy 17R-35L)
135.3 351.95 (Rwys 16L-34R, 16R-34L)



NOTE: Jet aircraft only.
 NOTE: BYYKE, BIVVY, GRAYZ, and TORYS Transitions, ATC assigned only.
 NOTE: Denver Center will issue "descend via" clearance and landing direction.
 NOTE: Expect runway assignment on initial contact with Denver TRACON.
 NOTE: Landing North select Rwy 34R Transition.
 NOTE: Landing South select Rwy 16L Transition.
 NOTE: Landing East select Rwy 7 Transition.
 NOTE: Landing West select Rwy 26 Transition.

- BIVVY TRANSITION (BIVVY.LONGZ4)
- BYYKE TRANSITION (BYYKE.LONGZ4)
- GRAYZ TRANSITION (GRAYZ.LONGZ4)
- KAMPR TRANSITION (KAMPR.LONGZ4)
- LBERT TRANSITION (LBERT.LONGZ4)
- TORYS TRANSITION (TORYS.LONGZ4)

NOTE: Chart not to scale.

(CONTINUED ON FOLLOWING PAGE)

SW-1, 14 MAY 2026 to 11 JUN 2026