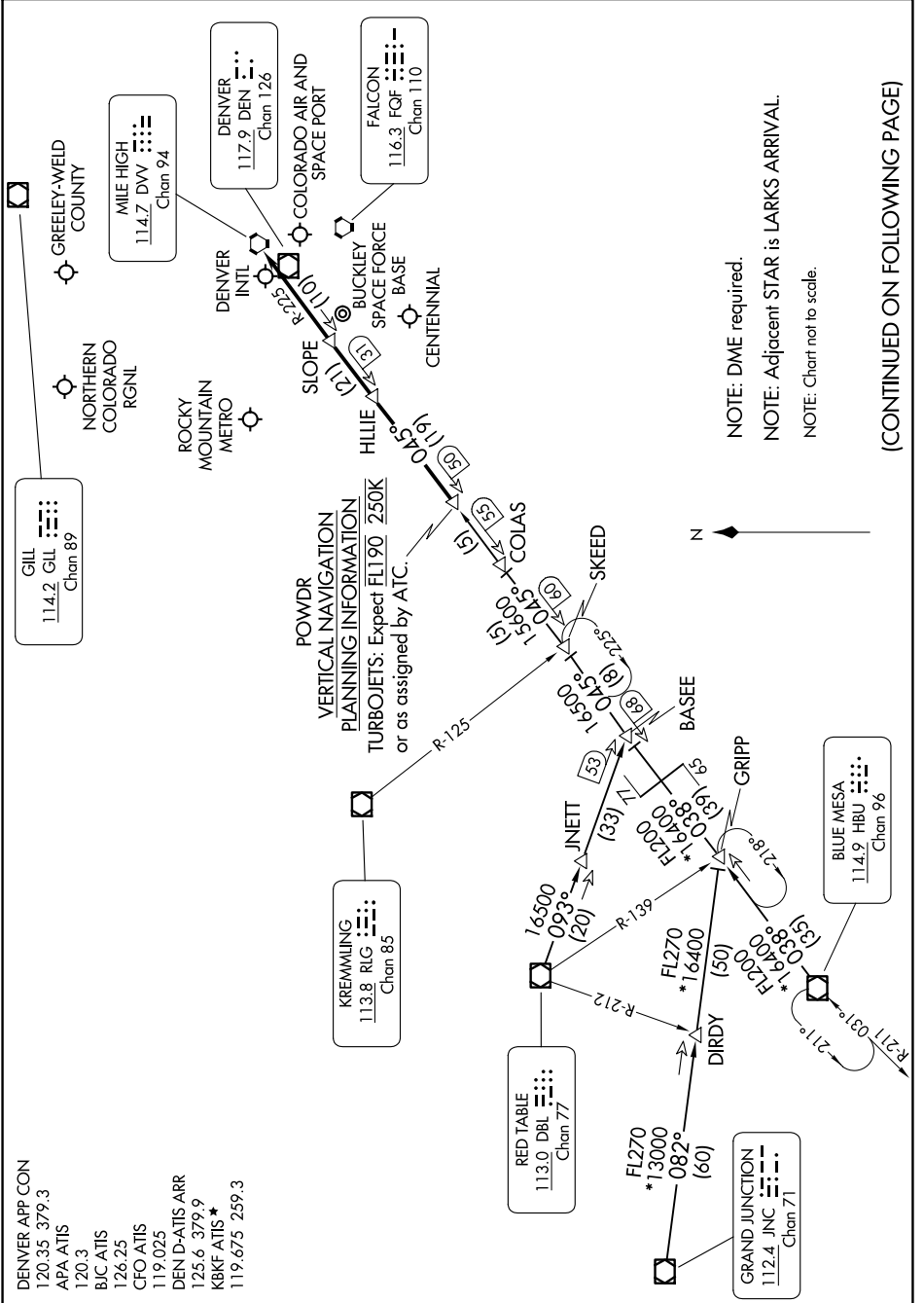


# POWDR ONE ARRIVAL

SW-1, 14 MAY 2026 to 11 JUN 2026



NOTE: DME required.  
 NOTE: Adjacent STAR is LARKS ARRIVAL.  
 NOTE: Chart not to scale.

(CONTINUED ON FOLLOWING PAGE)

SW-1, 14 MAY 2026 to 11 JUN 2026

# POWDR ONE ARRIVAL