

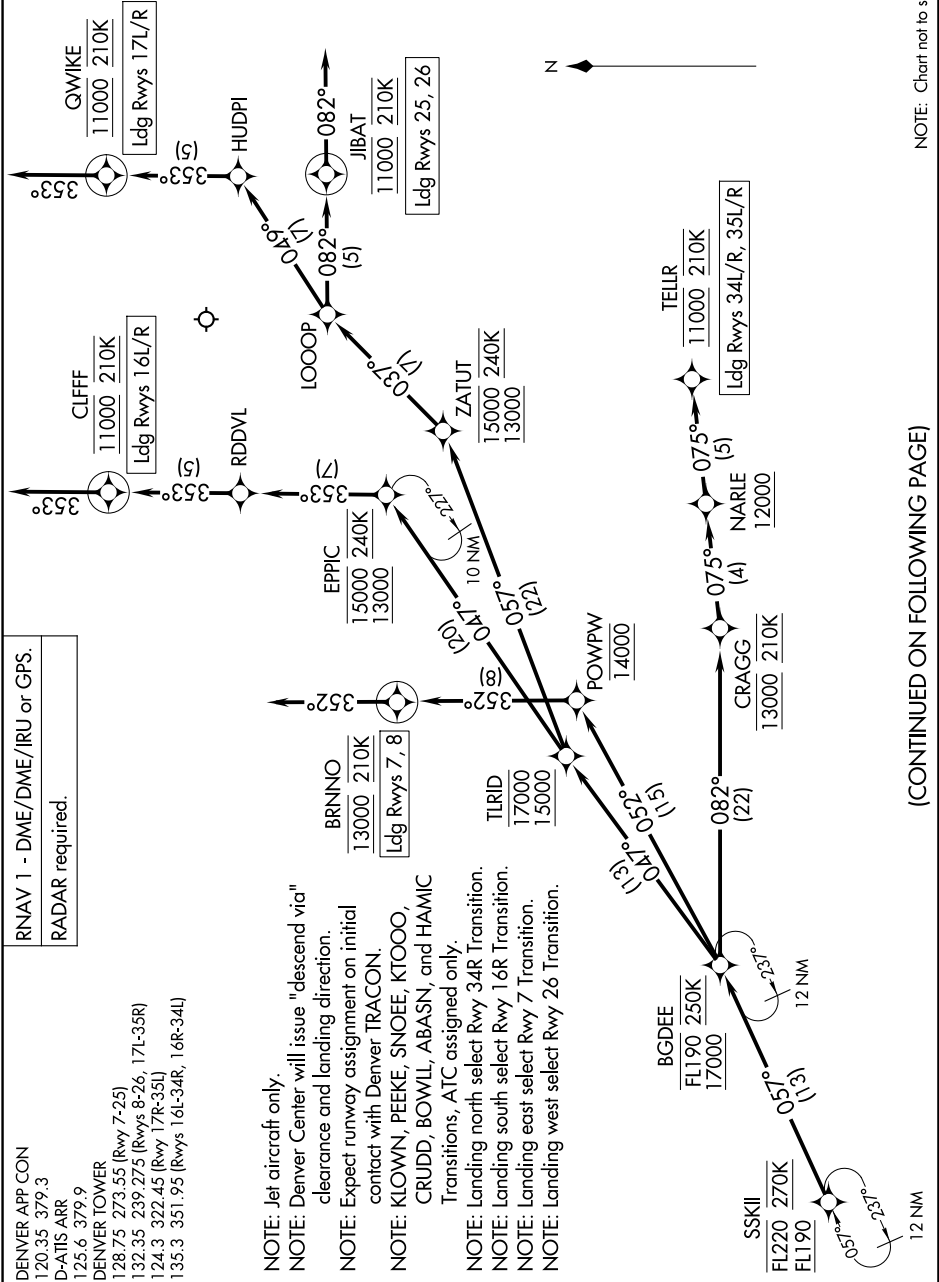
SSKII FOUR ARRIVAL (RNAV) Arrival Routes

SW-1, 14 MAY 2026 to 11 JUN 2026

RNAV 1 - DME/DME/IRU or GPS.
RADAR required.

DENVER APP CON
120.35 379.3
D-ATIS ARR
125.6 379.9
DENVER TOWER
128.75 273.55 (Rwy 7-25)
132.35 239.275 (Rwys 8-26, 17L-35R)
124.3 322.45 (Rwy 17R-35L)
135.3 351.95 (Rwys 16L-34R, 16R-34I)

NOTE: Jet aircraft only.
NOTE: Denver Center will issue "descend via" clearance and landing direction.
NOTE: Expect runway assignment on initial contact with Denver TRACON.
NOTE: KLOWN, PEEKE, SNOEE, KTOOO, CRUDD, BOWLL, ABASN, and HAMIC Transitions, ATC assigned only.
NOTE: Landing north select Rwy 34R Transition.
NOTE: Landing south select Rwy 16R Transition.
NOTE: Landing east select Rwy 7 Transition.
NOTE: Landing west select Rwy 26 Transition.



NOTE: Chart not to scale.

(CONTINUED ON FOLLOWING PAGE)

SW-1, 14 MAY 2026 to 11 JUN 2026

SSKII FOUR ARRIVAL (RNAV) Arrival Routes