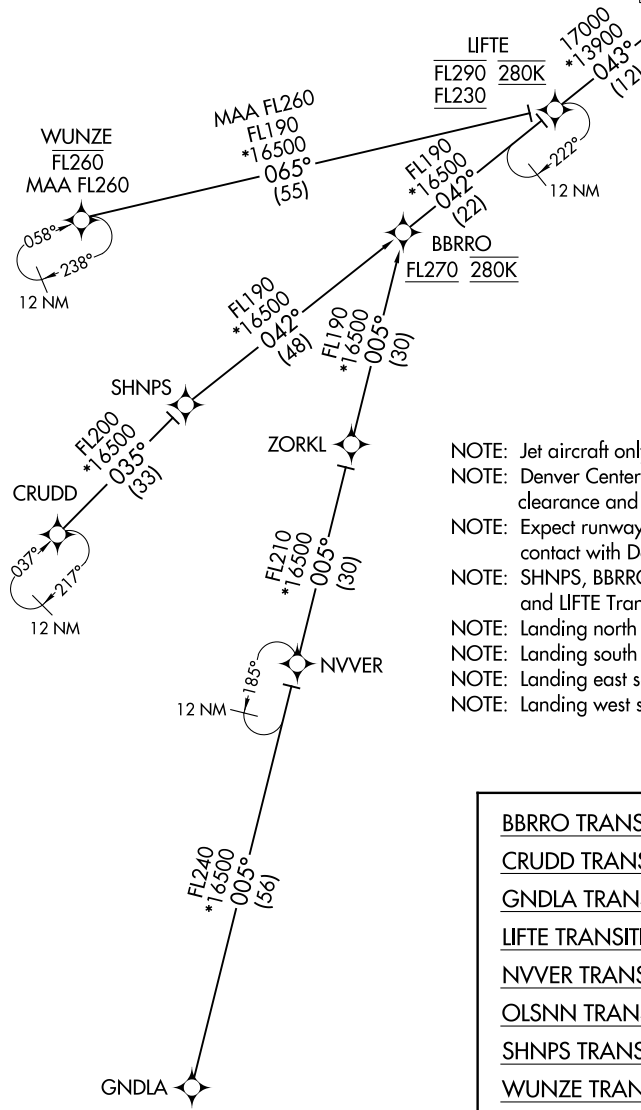
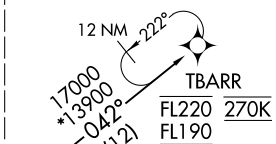


# TBARR FOUR ARRIVAL (RNAV) Transition Routes

DENVER APP CON  
120.35 379.3  
D-ATIS ARR  
125.6 379.9  
DENVER TOWER  
128.75 273.55 (Rwy 7-25)  
132.35 239.275 (Rwys 8-26, 17L-35R)  
124.3 322.45 (Rwy 17R-35L)  
135.3 351.95 (Rwys 16L-34R, 16R-34L)

RNAV 1 - DME/DME/IRU or GPS.  
RADAR required.

See following page for arrival routes.



- NOTE: Jet aircraft only.
- NOTE: Denver Center will issue "descend via" clearance and landing direction.
- NOTE: Expect runway assignment on initial contact with Denver TRACON.
- NOTE: SHNPS, BBRRO, NVVER, OLSNN, ZORKL, and LIFTE Transitions, ATC assigned only.
- NOTE: Landing north select Rwy 35L Transition.
- NOTE: Landing south select Rwy 16R Transition.
- NOTE: Landing east select Rwy 7 Transition.
- NOTE: Landing west select Rwy 26 Transition.

NOTE: Chart not to scale.

- BBRRO TRANSITION (BBRRO.TBARR4)
- CRUDD TRANSITION (CRUDD.TBARR4)
- GNDLA TRANSITION (GNDLA.TBARR4)
- LIFTE TRANSITION (LIFTE.TBARR4)
- NVVER TRANSITION (NVVER.TBARR4)
- OLSNN TRANSITION (OLSNN.TBARR4)
- SHNPS TRANSITION (SHNPS.TBARR4)
- WUNZE TRANSITION (WUNZE.TBARR4)
- ZORKL TRANSITION (ZORKL.TBARR4)

(CONTINUED ON FOLLOWING PAGE)

SW-1, 14 MAY 2026 to 11 JUN 2026

SW-1, 14 MAY 2026 to 11 JUN 2026