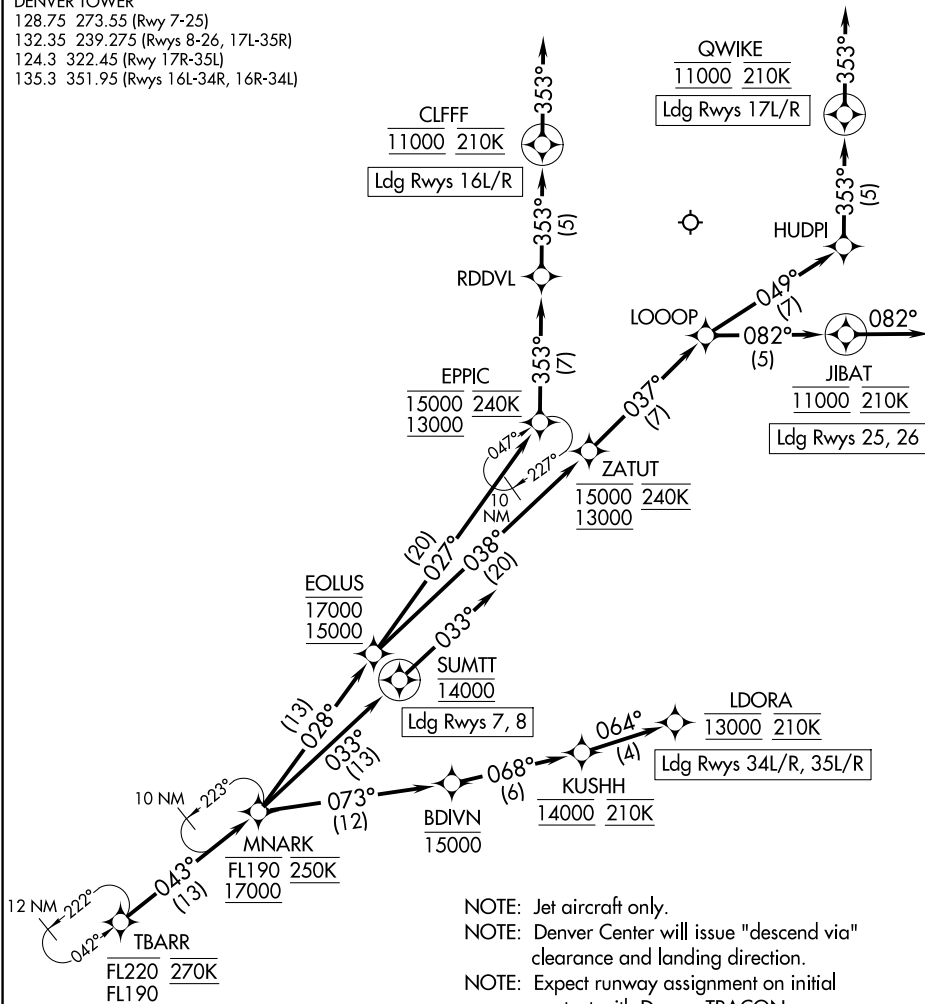


# TBARR FOUR ARRIVAL (RNAV) Arrival Routes

DENVER APP CON  
 120.35 379.3  
 D-ATIS ARR  
 125.6 379.9  
 DENVER TOWER  
 128.75 273.55 (Rwys 7-25)  
 132.35 239.275 (Rwys 8-26, 17L-35R)  
 124.3 322.45 (Rwy 17R-35L)  
 135.3 351.95 (Rwys 16L-34R, 16R-34L)

RNAV 1 - DME/DME/IRU or GPS.  
 RADAR required.



- NOTE: Jet aircraft only.
- NOTE: Denver Center will issue "descend via" clearance and landing direction.
- NOTE: Expect runway assignment on initial contact with Denver TRACON.
- NOTE: SHNPS, BBRRO, NVVER, OLSNN, ZORKL, and LIFTE Transitions, ATC assigned only.
- NOTE: Landing north select Rwy 35L Transition.
- NOTE: Landing south select Rwy 16R Transition.
- NOTE: Landing east select Rwy 7 Transition.
- NOTE: Landing west select Rwy 26 Transition.

(CONTINUED ON FOLLOWING PAGE)

NOTE: Chart not to scale.

# TBARR FOUR ARRIVAL (RNAV) Arrival Routes

SW-1, 14 MAY 2026 to 11 JUN 2026

SW-1, 14 MAY 2026 to 11 JUN 2026