

# ZIMMR FOUR DEPARTURE (RNAV)

AL-9077 (FAA)

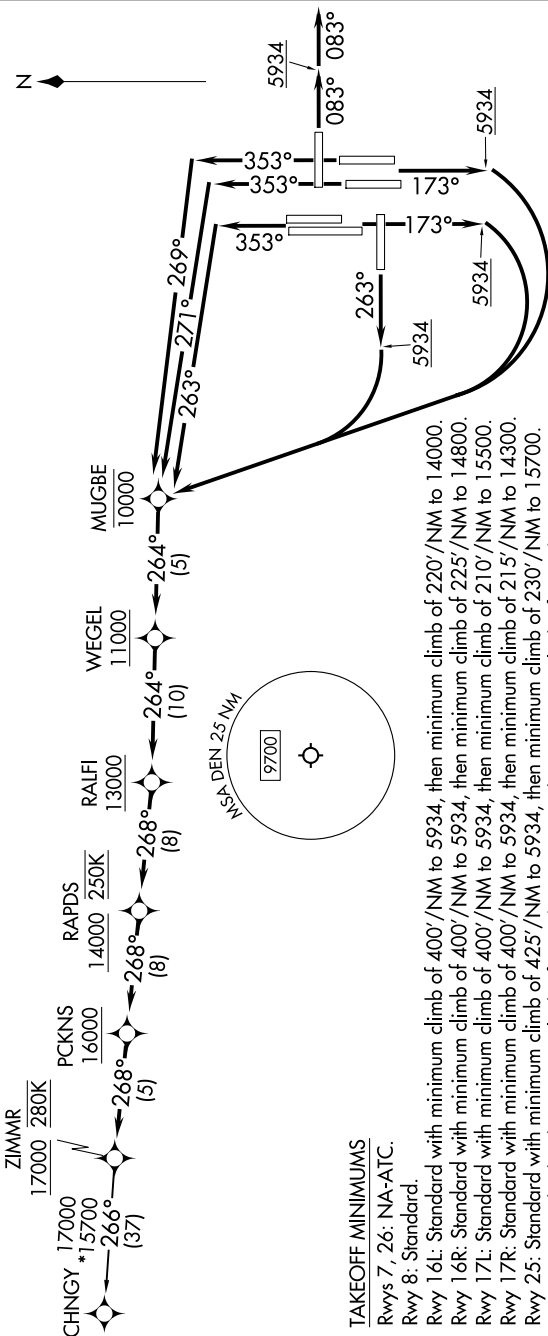
DENVER INTL (DEN)  
DENVER, COLORADO

SW-1, 14 MAY 2026 to 11 JUN 2026

RNAV 1 - DME/DME/IRU or GPS.  
 TAKEOFF Rwy 8 RADAR required.  
 TAKEOFF Rwys 16L/R, 17L/R, 25, 34L/R, 35L/R  
 RADAR required for non-GPS equipped aircraft.

**TOP ALTITUDE:  
FL230**

NOTE: Turbojets only.  
 NOTE: Accelerate to 250K upon reaching 10000. If slower speed is required to meet crossing restrictions, advise CINC DEL prior to taxi.



**TAKEOFF MINIMUMS**  
 Rwy 7, 26: NA-ATC.  
 Rwy 8: Standard.

Rwy 16L: Standard with minimum climb of 400'/NM to 5934, then minimum climb of 220'/NM to 14000.  
 Rwy 16R: Standard with minimum climb of 400'/NM to 5934, then minimum climb of 225'/NM to 14800.  
 Rwy 17L: Standard with minimum climb of 400'/NM to 5934, then minimum climb of 210'/NM to 15500.  
 Rwy 17R: Standard with minimum climb of 400'/NM to 5934, then minimum climb of 215'/NM to 14300.  
 Rwy 25: Standard with minimum climb of 425'/NM to 5934, then minimum climb of 230'/NM to 15700.  
 Rwy 34L: Standard with minimum climb of 400'/NM to 5934, then minimum climb of 230'/NM to 14600.  
 Rwy 34R: Standard with minimum climb of 400'/NM to 5934, then minimum climb of 220'/NM to 15700.  
 Rwy 35L: Standard with minimum climb of 400'/NM to 5934, then minimum climb of 215'/NM to 14000.  
 Rwy 35R: Standard with minimum climb of 400'/NM to 5934, then minimum climb of 210'/NM to 14500.

(CONTINUED ON FOLLOWING PAGE)

NOTE: Chart not to scale.

SW-1, 14 MAY 2026 to 11 JUN 2026

# ZIMMR FOUR DEPARTURE (RNAV)

DENVER, COLORADO  
DENVER INTL (DEN)