

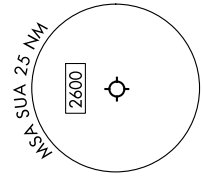
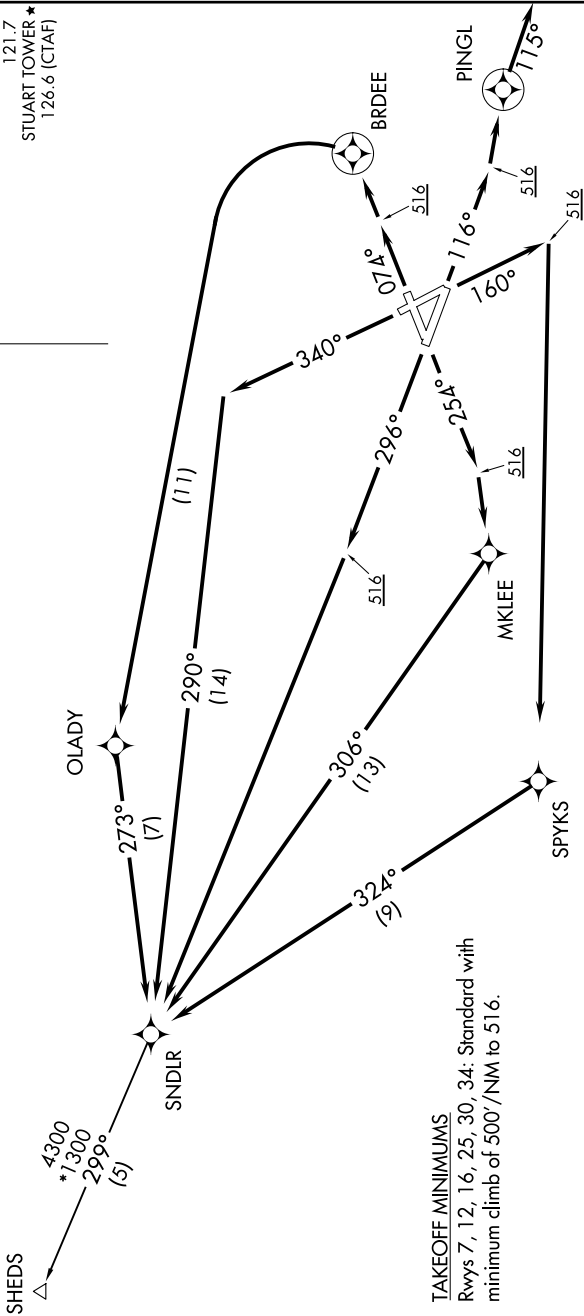
# SNDLR THREE DEPARTURE (RNAV)

SE-3, 14 MAY 2026 to 11 JUN 2026

PALM BEACH DEP CON  
123.625  
ATIS  
134.475  
GND CON  
121.7  
STUART TOWER\*  
126.6 (CTAF)

**TOP ALTITUDE:  
3000**

RNAV 1 - DME/DME/IRU or GPS.  
RADAR required.



**TAKEOFF MINIMUMS**  
Rwys 7, 12, 16, 25, 30, 34: Standard with  
minimum climb of 500'/NM to 516.

**NOTE:** Jet and turboprop aircraft only.  
**NOTE:** Transponder code will be issued via SUA ground  
control or PBI APP CON when tower closed.

(CONTINUED ON FOLLOWING PAGE)

NOTE: Chart not to scale.

SE-3, 14 MAY 2026 to 11 JUN 2026

# SNDLR THREE DEPARTURE (RNAV)