

APP CRS	Rwy Ldg	2660
296°	TDZE	30
	Apt Elev	30

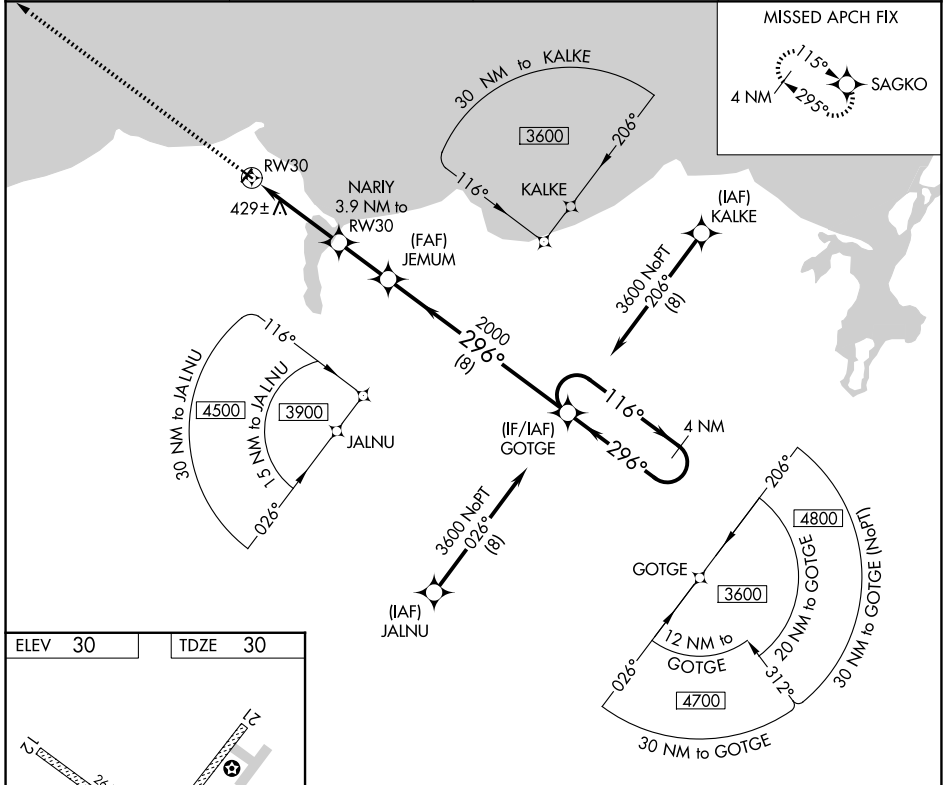
RNAV (GPS) RWY 30

DEERING (DEE)(PADE)

DME/DME RNP-0.3 NA.
 Rwy 30 helicopter visibility reduction below 1 SM NA.
 -39°C Straight-in Rwy 12 NA at night, Circling Rwy 12, 30 NA at night.

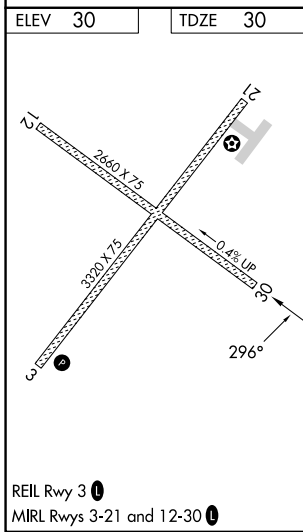
MISSED APPROACH: Climb to 3000 direct SAGKO and hold.

ASOS 135.5	ANCHORAGE CENTER 119.2 263.0	KOTZEBUE RADIO 122.25	CTAF 122.9
----------------------	--	---------------------------------	----------------------



AK, 14 MAY 2026 to 09 JUL 2026

AK, 14 MAY 2026 to 09 JUL 2026



3000 SAGKO JEMUM NARIY 3.9 NM to RW30 RW30 GOTGE 4 NM Holding Pattern	Visual Segment - Obstacles.			
	1300 2000 3600		116° → ← 296°	
3.9 NM 2.2 NM 8 NM				
CATEGORY	A	B	C	D
INAV MDA	740-1	710 (800-1)	740-2 710 (800-2)	NA
CIRCLING	740-1 710 (800-1)	840-1 810 (900-1)	840-2¼ 810 (900-2¼)	NA