

ALEXANDRIA THREE DEPARTURE

**TOP ALTITUDE:
ASSIGNED BY ATC**

HOUSTON DEP CON
123.8 257.7
ATIS
119.525
CLNC DEL
132.075
GND CON
132.075
EXECUTIVE TOWER *
126.975 (CTAF)

LUFKIN
112.1 LFK
Chan 58

ALEXANDRIA
116.1 AEX
Chan 108

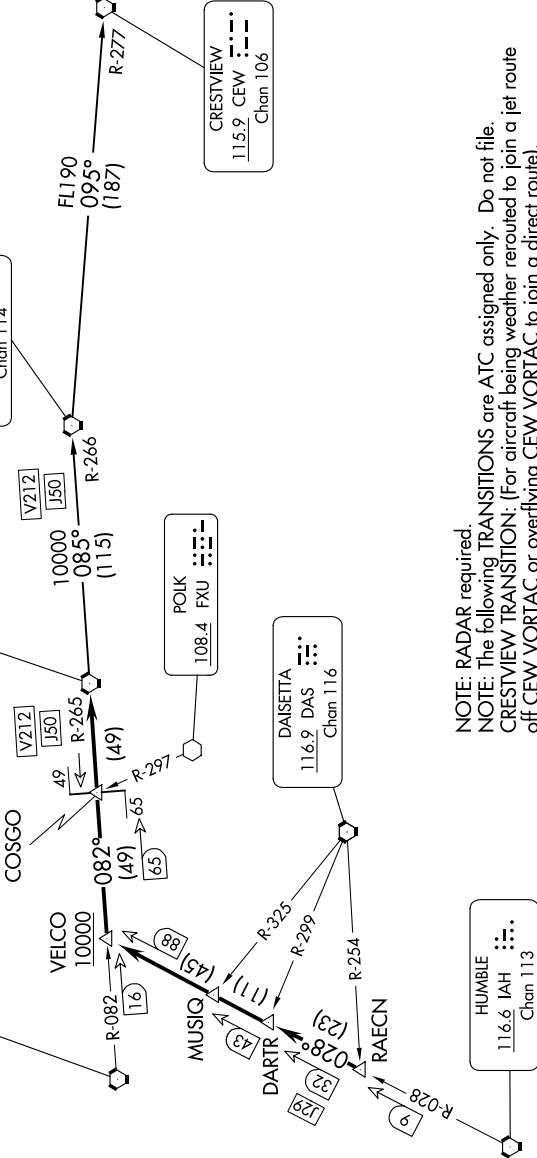
MC COMB
116.7 MCB
Chan 114

CRESTVIEW
115.9 CEW
Chan 106

HUMBLE
116.6 IAH
Chan 113

DAISETTA
116.9 DAS
Chan 116

POIK
108.4 FXU
Chan 108



NOTE: RADAR required.
NOTE: The following TRANSITIONS are ATC assigned only. Do not file.
CRESTVIEW TRANSITION: (For aircraft being weather rerouted to join a jet route off CEW VORTAC or overflying CEW VORTAC to join a direct route).
MC COMB TRANSITION: (For aircraft being weather rerouted to join a jet route off MCB VORTAC or overflying MCB VORTAC to join a direct route).

TAKEOFF MINIMUMS
Rwys 18, 36: Standard.

NOTE: Chart not to scale.

(CONTINUED ON FOLLOWING PAGE)

ALEXANDRIA THREE DEPARTURE