

BORRN SIX DEPARTURE (RNAV)

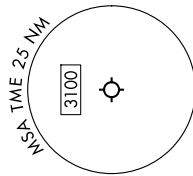
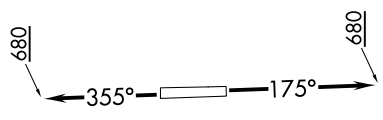
SC-5, 14 MAY 2026 to 11 JUN 2026

**TOP ALTITUDE:
ASSIGNED BY ATC**

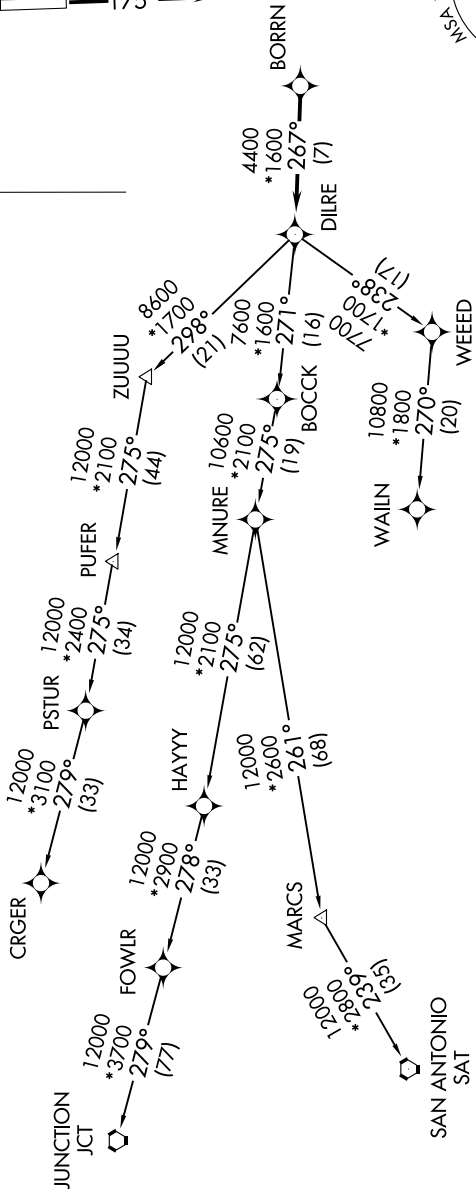
RNAV 1 - DME/DME/IRU or GPS.
RADAR required.

ATIS 119.525
CTAF 126.975
CLNC DEL 132.075
HOUSTON DEP CON 123.8 257.7

TAKEOFF MINIMUMS
Rwy 18, 36: Standard with minimum climb of 500'/NM to 680.



NOTE: Chart not to scale.



NOTE: CRGR-TRANSITION ATC assigned only for aircraft departing 54T, AXH, EFD, GLS, HPY, IWS, LBX, LVJ, SGR, TME, T00, T41.

(CONTINUED ON FOLLOWING PAGE)

SC-5, 14 MAY 2026 to 11 JUN 2026

BORRN SIX DEPARTURE (RNAV)