

KARR SEVEN DEPARTURE (RNAV)

**TOP ALTITUDE:
ASSIGNED BY ATC**

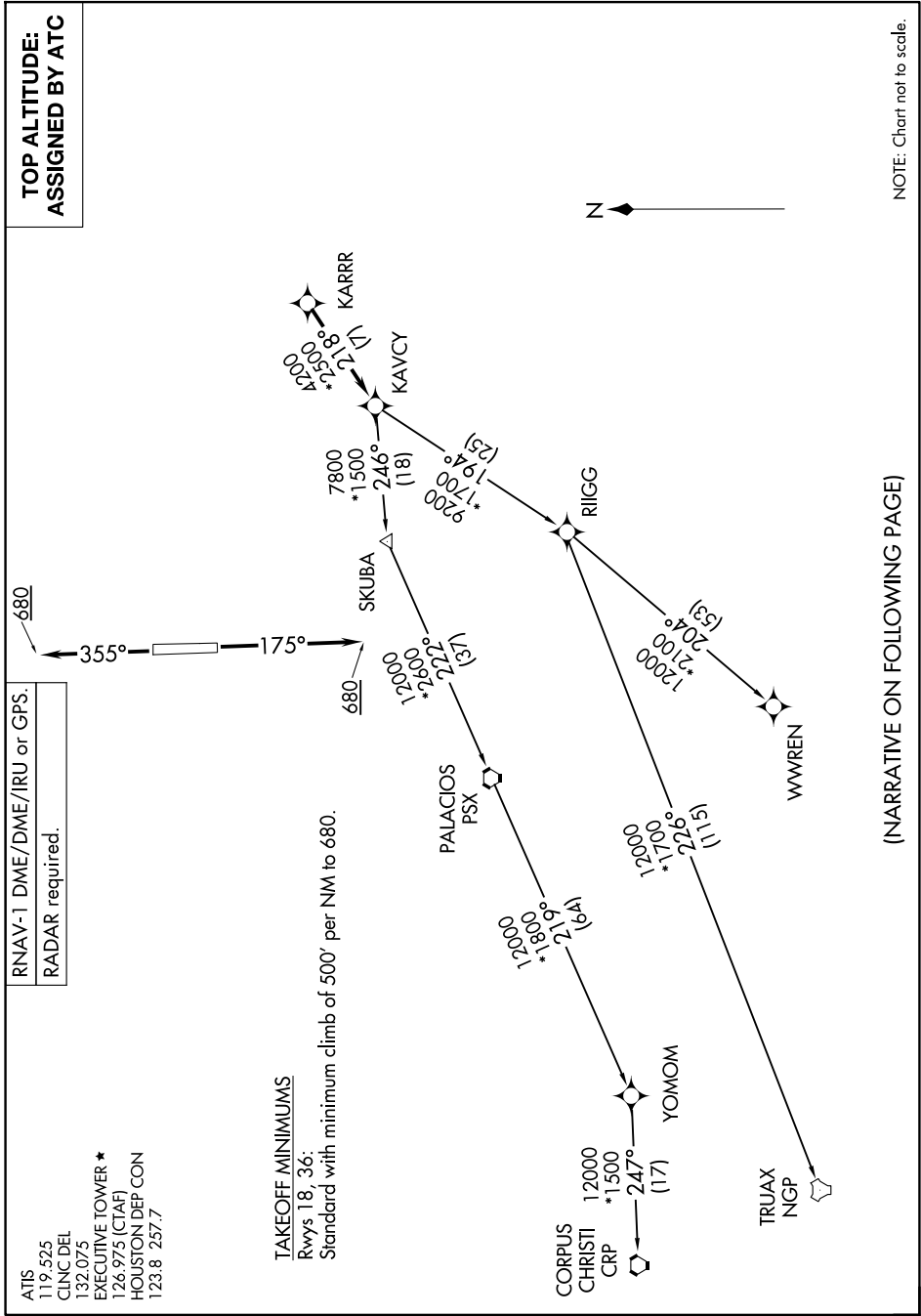
RNAV-1 DME/DME/IRU or GPS.
RADAR required.

ATIS 119.525
CLNC DEL 132.075
EXECUTIVE TOWER * 126.975 (CTAF)
HOUSTON DEP CON 123.8 257.7

TAKEOFF MINIMUMS

Rwys 18, 36:
Standard with minimum climb of 500' per NM to 680.

SC-5, 14 MAY 2026 to 11 JUN 2026



NOTE: Chart not to scale.

(NARRATIVE ON FOLLOWING PAGE)

SC-5, 14 MAY 2026 to 11 JUN 2026

KARR SEVEN DEPARTURE (RNAV)