

LUFKIN FOUR DEPARTURE

HOUSTON DEP CON
 123.8 257.7
 ATIS
 119.525
 CLNC DEL
 132.075
 GND CON
 132.075
 EXECUTIVE TOWER ★
 126.975 (CTAF)

**TOP ALTITUDE:
 ASSIGNED BY ATC**

LITTLE ROCK
 115.1 LIT
 Chan 98

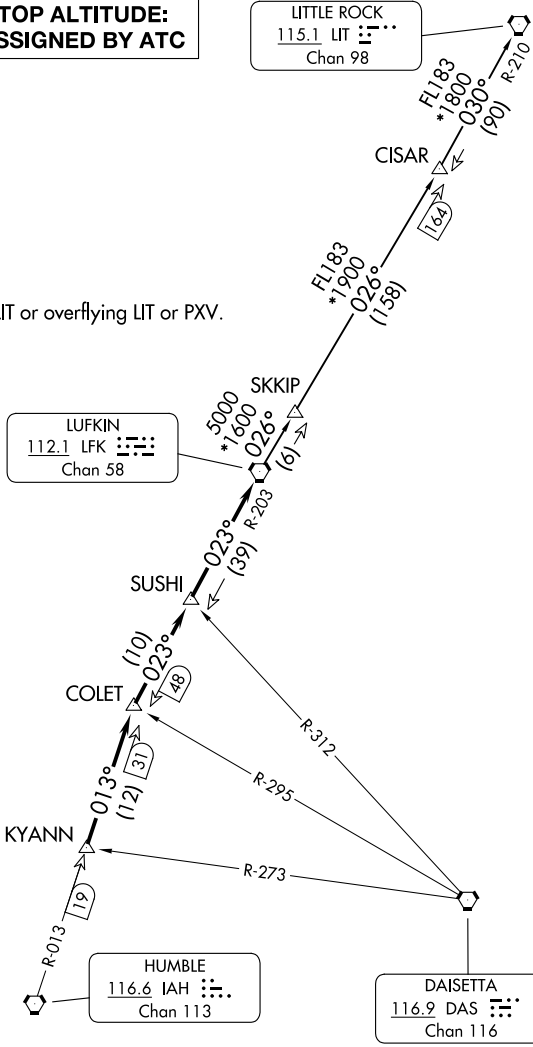
RADAR and DME required.

NOTE: For aircraft destined LIT or overflying LIT or PXV.

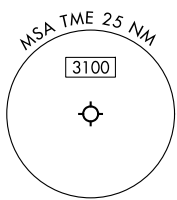
LUFKIN
 112.1 LFK
 Chan 58

HUMBLE
 116.6 IAH
 Chan 113

DAISETTA
 116.9 DAS
 Chan 116



TAKEOFF MINIMUMS
 Rwy 18, 36: Standard.



NOTE: Chart not to scale.

(CONTINUED ON FOLLOWING PAGE)

SC-5, 14 MAY 2026 to 11 JUN 2026

SC-5, 14 MAY 2026 to 11 JUN 2026

LUFKIN FOUR DEPARTURE