

LOC/DME I-EMB 109.75 Chan 34(Y)	APP CRS 175°	Rwy Ldg TDZE Apt Elev 7202 1771 1791
---	------------------------	--

LOC RWY 17R

ABILENE RGNL (ABI)

ADF required for missed approach.

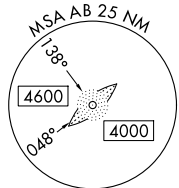
MISSED APPROACH: Climb to 2800 then climbing left turn to 4000 direct TOMHI LOM and hold.

ATIS 118.25	ABILENE APP CON 125.0 338.3 (E) 127.2 282.3 (W)	ABILENE TOWER 120.1 257.8	GND CON 121.7 348.6
-----------------------	---	-------------------------------------	-------------------------------

ALTERNATE MISSED APCH FIX

ABILENE
113.7 ABI Chan 84

R-285-105°
285°



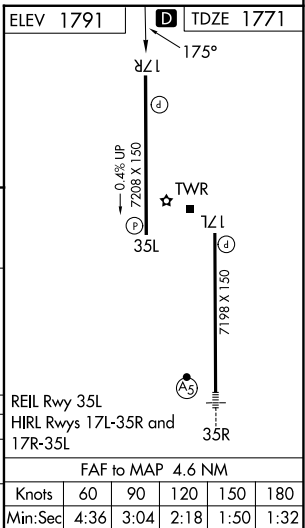
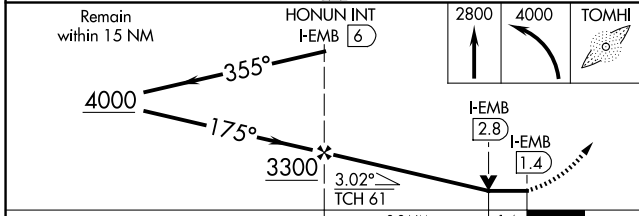
Procedure NA for arrival on ABI VORTAC airway radials 037 CW 099.

ABILENE
113.7 ABI Chan 84

Procedure NA for arrival on TQA VOR/DME airway radial 082.

TUSCOLA
114.85 TQA Chan 95(Y)

LOM TOMHI
353 AB **AB**



CATEGORY	A	B	C	D	E
S-LOC 17R	2280-1	509 (500-1)	2280-1 ³ / ₈ 509 (500-1 ³ / ₈)		
CIRCLING	2300-1 509 (600-1)	2320-1 529 (600-1)	2420-1 ³ / ₄ 629 (700-1 ³ / ₄)	2460-2 669 (700-2)	2620-3 829 (900-3)

SC-2, 11 JUN 2026 to 09 JUL 2026

SC-2, 11 JUN 2026 to 09 JUL 2026