


HI-ILS or LOC X RWY 34

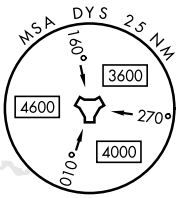
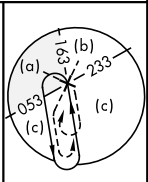
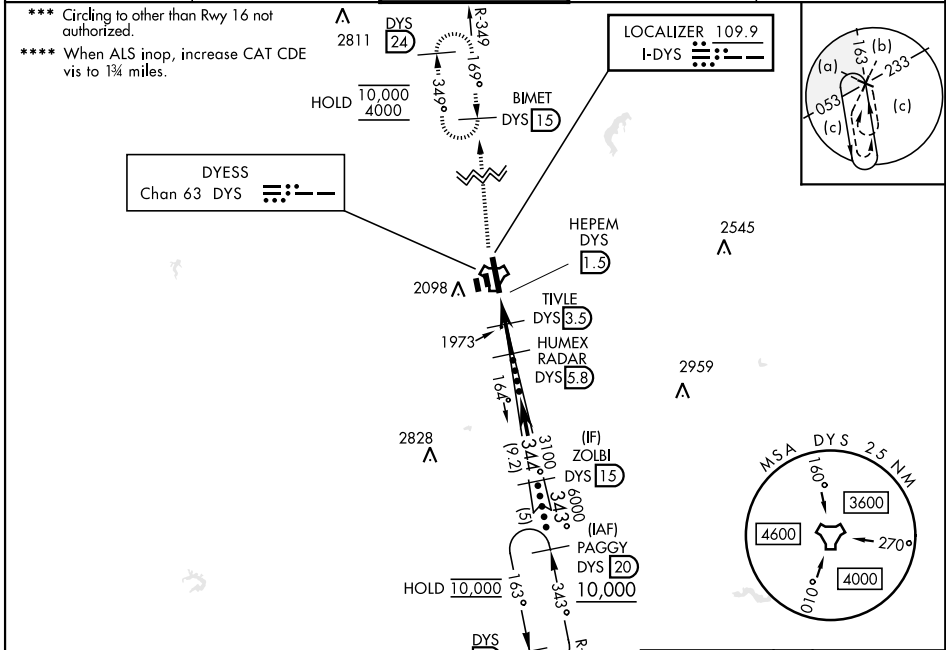
LOC I-DYS 109.9	APCH CRS 344°	Rwy Idg 13,499 TDZE 1788 Arprt Elev 1799	[USAF]	DYESS AFB (KDYS)
---------------------------	-------------------------	---	--------	------------------

RADAR or DME required. ALSF-1 

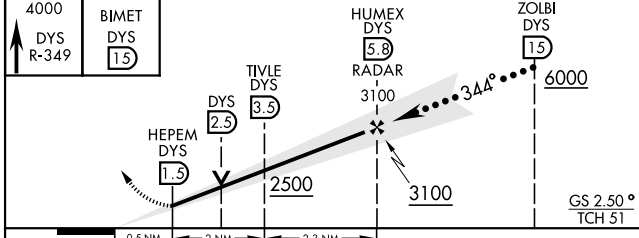
* When ALS inop, increase CAT CDE RVR to 40 and vis to 3/4 mile.
** When ALS inop, increase CAT CDE vis to 1 3/8 miles.

MISSED APPROACH: Climb to 4000 via DYS TACAN R-349 to BIMET and hold.

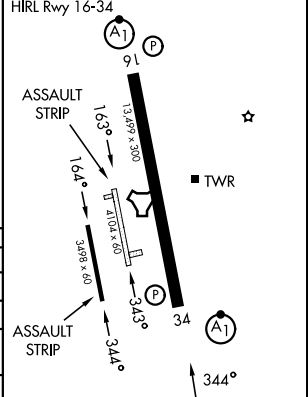
ATIS ★ 269.175	ABILENE APP CON 125.0 338.3 EAST 127.2 282.3 WEST	TOWER 133.0 257.675	GND CON 118.35 275.8	ASR
--------------------------	---	-------------------------------	--------------------------------	-----



EMERG SAFE ALT 100 NM 4600



ELEV 1799	TDZE 1788
-----------	-----------



CATEGORY	C	D	E
S-ILS 34*	1988/24	200	(200-1/2)
S-LOC 34**	2240/45	452	(500-7/8)
CIRCLING***	2440-1 3/4 650 (700-1 3/4)	2480-2 1/4 690 (700-2 1/4)	2540-2 3/4 750 (800-2 3/4)
	WITHOUT LAST STEPDOWN FIX		
S-LOC 34****	2420-1 3/8	632	(700-1 3/8)
CIRCLING***	2440-1 3/4 650 (700-1 3/4)	2480-2 1/4 690 (700-2 1/4)	2540-2 3/4 750 (800-2 3/4)

FAF to MAP 4.3 NM					
Knots	120	140	160	180	200
Min:Sec	2:09	1:51	1:37	1:26	1:17

HI-ILS or LOC X RWY 34

SC-2, 11 JUN 2026 to 09 JUL 2026

SC-2, 11 JUN 2026 to 09 JUL 2026