

ABILENE, TEXAS

HI-TACAN X RWY 16

TACAN DYS Chan 63	APCH CRS 169°	Rwy Idg 13,499 TDZE 1790 Arprt Elev 1799
-----------------------------	-------------------------	---

[USAF]

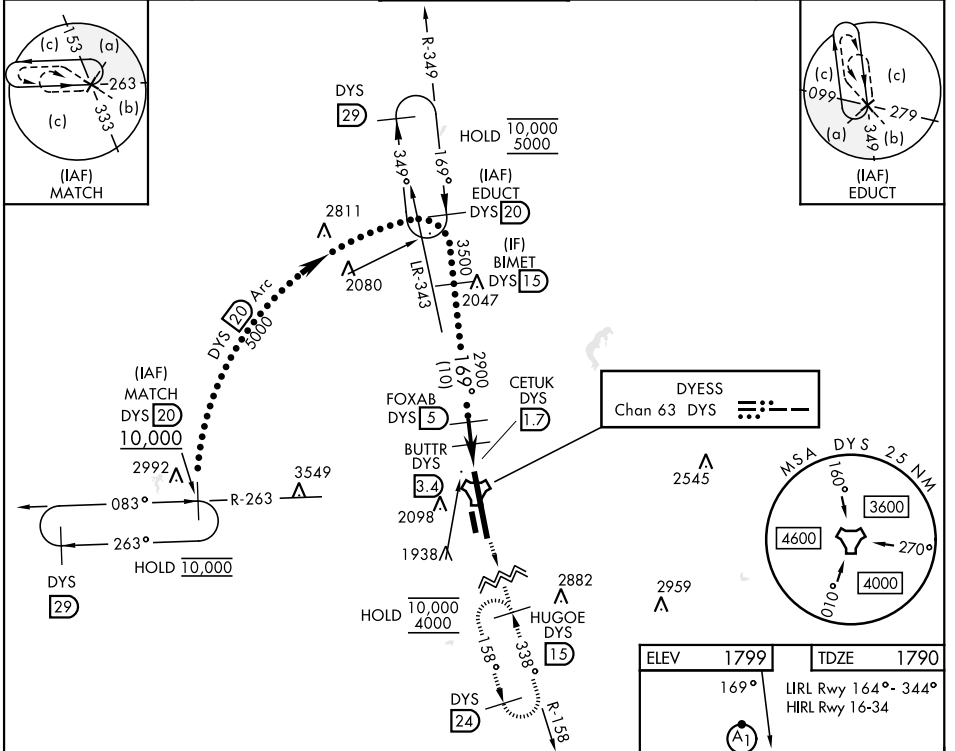
DYESS AFB (KDYS)

* When ALS inop, increase CAT CDE RVR to 60, vis to 1½ miles.
 ** Circling to other than Rwy 34 not authorized.

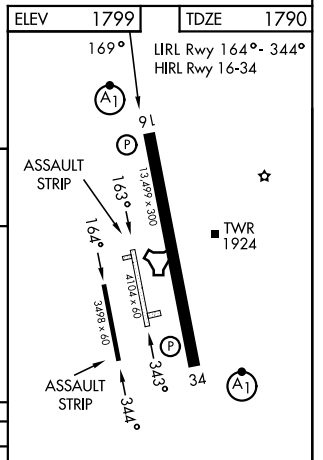
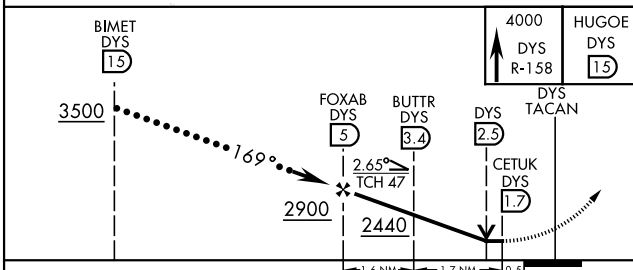
ALSF-1

MISSED APPROACH: Climb to 4000 via
 DYS TACAN R-158 to HUGOE and hold.

ATIS ★ 269.175	ABILENE APP CON 125.0 338.3 EAST 127.2 282.3 WEST	DYESS TOWER 133.0 257.675	GND CON 118.35 275.8	ASR
--------------------------	---	-------------------------------------	--------------------------------	-----



EMERG SAFE ALT 100 NM 4600



CATEGORY	C	D	E
S-16*	2200/40	410	(500-¾)
CIRCLING **	2400-1¾ 610 (700-1¾)	2480-2¼ 690 (700-2¼)	2540-2¾ 750 (800-2¾)

FAF to MAP 3.3 NM					
Knots	120	140	160	180	200
Min:Sec	1:39	1:25	1:14	1:06	0:59

ABILENE, TEXAS
Amdt 4 25DEC25

32°25'N-99°51'W

DYESS AFB (KDYS)

HI-TACAN X RWY 16

SC-2, 11 JUN 2026 to 09 JUL 2026

SC-2, 11 JUN 2026 to 09 JUL 2026