

HI-TACAN X RWY 34

TACAN Chan 63	APCH CRS 338°	Rwy Idg 13,499 TDZE 1788 Arprt Elev 1799
-------------------------	-------------------------	---

[USAF]

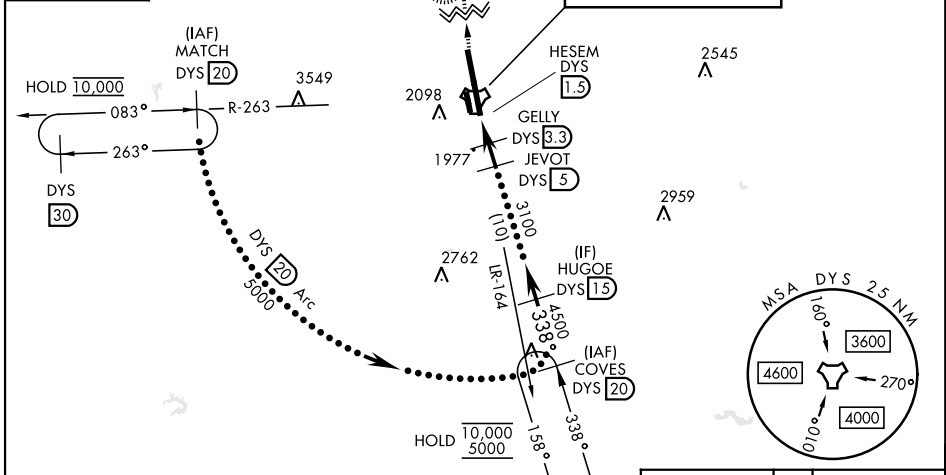
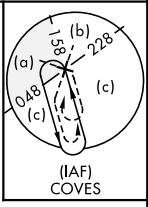
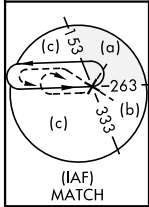
DYESS AFB (KDYS)

* When ALS inop, increase CAT CDE vis to 1 3/4 miles.
 ** Circling to other than Rwy 16 not authorized.



MISSED APPROACH: Climb to 4000 via
 DYS TACAN R-349 to BIMET and hold.

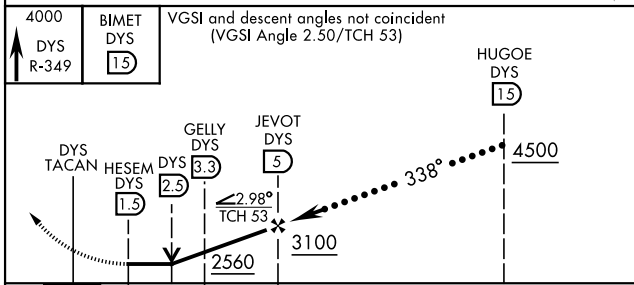
ATIS ★ 269.175	ABILENE APP CON 125.0 338.3 EAST 127.2 282.3 WEST	DYESS TOWER 133.0 257.675	GND CON 118.35 275.8	ASR
--------------------------	---	-------------------------------------	--------------------------------	-----



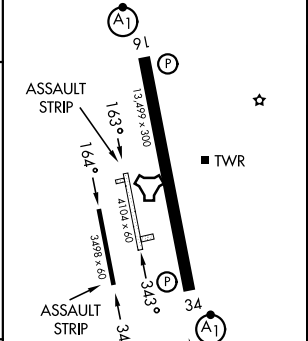
SC-2, 11 JUN 2026 to 09 JUL 2026

SC-2, 11 JUN 2026 to 09 JUL 2026

EMERG SAFE ALT 100 NM 4600



ELEV	1799	TDZE	1788
------	------	------	------



CATEGORY	C	D	E
S-34 *	2240/45	452	(500-7%)
CIRCLING **	2440-1 3/4 650 (700-1 3/4)	2480-2 1/4 690 (700-2 1/4)	2540-2 3/4 750 (800-2 3/4)

LIRL Rwy 164° - 344°	FAF to MAP 3.5 NM					
HIRL Rwy 16-34	Knots	120	140	160	180	200
	Min:Sec	1:45	1:30	1:19	1:10	1:03

HI-TACAN X RWY 34